

designingways

ISSUE 286

SHAPES

MORE TEXTURES

HELLO SUMMER



RSA R150.00

Our new In/ Outdoor Kunene Range

by Design Team Fabrics

We're thrilled to share our Kunene fabric collection, inspired by the serene beauty of the Kunene River, is here! These designs capture the natural wonder of the river and its landscapes with organic patterns that reflect flowing water and the earthy environment. The prints are brought to life through watercolour techniques, letting the river's fluidity and the land's richness shine through.

It's printed on a Cotton/Linseed base cloth and creates a wonderfully soft



Cobblestone and Kleilat are available in three stunning colour ways: Mud, Green and Neutral



Explore the Makora design and experience the beauty of the Kunene River in your own home.
Available in 4 colour ways : Aqua, Green, mud , neutral



textured-handle, making it useable for all indoor applications. With a 7- 8 light-fastness rating and a 50,000 rub count.

The Kunene range blends our signature Design Team colour palette with simple, striking African designs, fitting beautifully with our existing collections while making a statement of its own. The Makora design is the star of the range, in green, aqua, mud and neutral it works with any colour scheme. With the supporting cast of Ripple, Droplet and Fleck all the "smalls" you could need are there to create an earthy showpiece. Added to this we have the Kleilat and Cobblestone, acrylic solution dyed woven designs to fill up the complete performance

Be sure to keep an eye out on our website and social media - you won't want to miss it!

dw

www.designteamfabrics.co.za

Ripple comes in three earthy tone colourways that beautifully reflect the river's natural beauty



Explore the Makora design and experience the beauty of the Kunene River in your own home.
Available in 4 colour ways: Aqua, Green, mud , neutral



Droplet available in four stunning colour ways: Mud, Neutral, Lime and Green



Fleck is a versatile options that complements any design aesthetic

designing ways

CONTENTS

Issue 286

- ii DESIGN TEAM FABRICS
- 8 TRADE WINDS
Introducing The Forum Hyde Park
- 12 TRADE WINDS
Entries are now open for Workspace Design Shows first ever 'Workspace Well-being Hero'
- 14 IID
The African Institute of The Interior Design Professions
- 16 KSA
The Kitchen Specialists Association
- 18 LIGHTING OF NOTE
Larose Guyon's Saule Collection: A Modular Expression of Nature-Inspired Lighting



DESIGN TEAM FABRICS

Design Team is a Textile design company focusing on the creation of contemporary textiles and products inspired by Africa.

www.designteamfabrics.co.za

- 20 COMMERCIAL INTERIOR
Gervasoni Furnishes the La Locanda alle Vigne Restaurant

- 26 SHAPES
Shapes are the form or outline of an object.
by Stienie Greyling

- 28 SHAPES
The Artistic Legacy of Ken Scott in Rugs and Tapestries from Carpet Edition

- 30 SHAPES
Kreoo - Marble seating

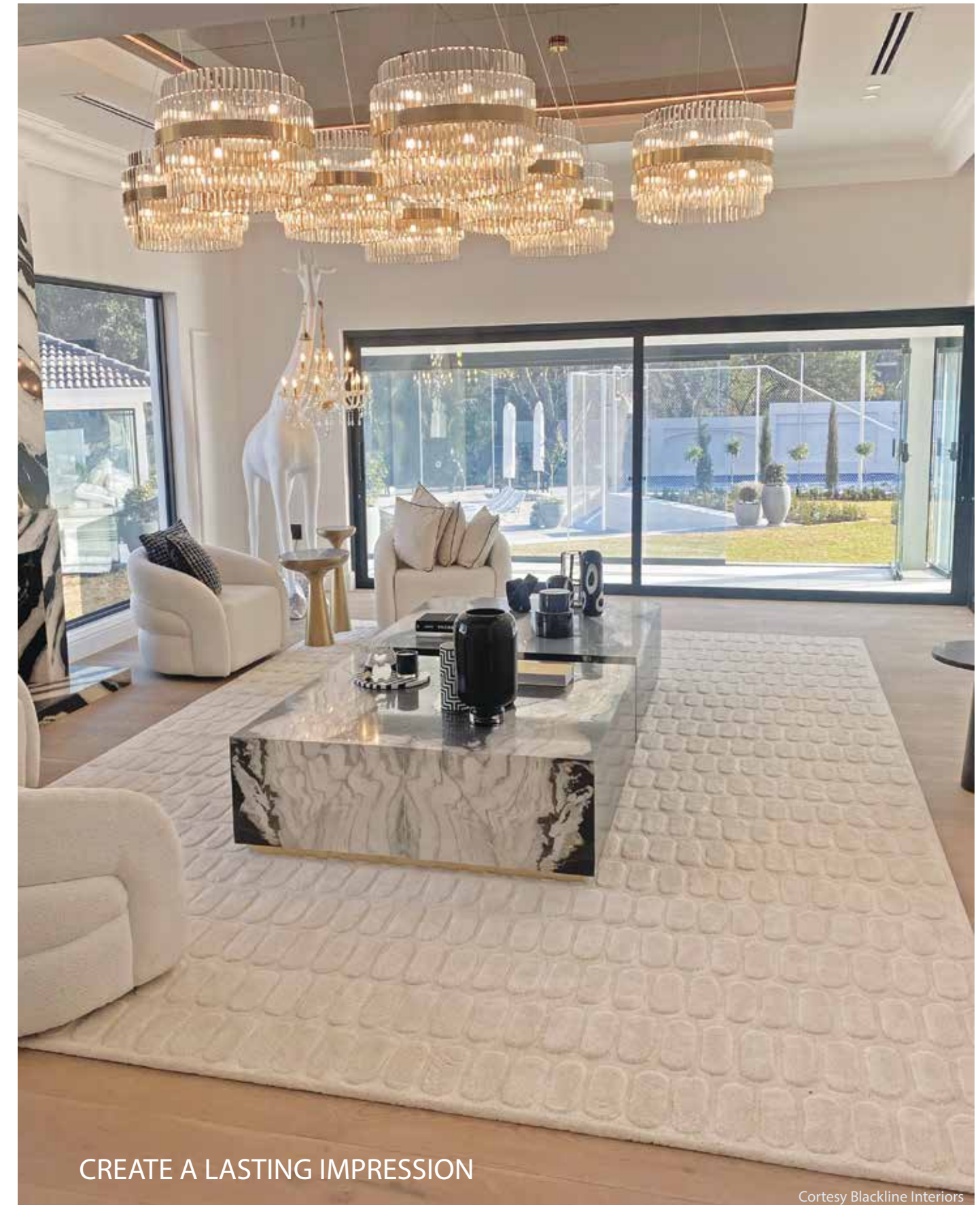
- 32 SHAPES
Albed - functional and decorative metal doors

- 34 SHAPES
Upper West Side Triplex - New York, United States

- 38 SHAPES
Roche Bobois

- 40 MORE TEXTURES
More Textures - by Stienie Greyling

- 42 MORE TEXTURES
Hybridity is the hero of the much-awaited Plascon 2025 Colour Forecast



CREATE A LASTING IMPRESSION

Courtesy Blackline Interiors

with Husky handcrafted rugs and carpets

Husky handmade carpets are crafted with utmost care, attention to detail and strictest quality control.

Custom made in 100% wool in any size, shape, colour and design, to complete your interior.

Showroom:
9 Appel Rd.
Kramerville,
Sandton
Tel: 011 444 3370



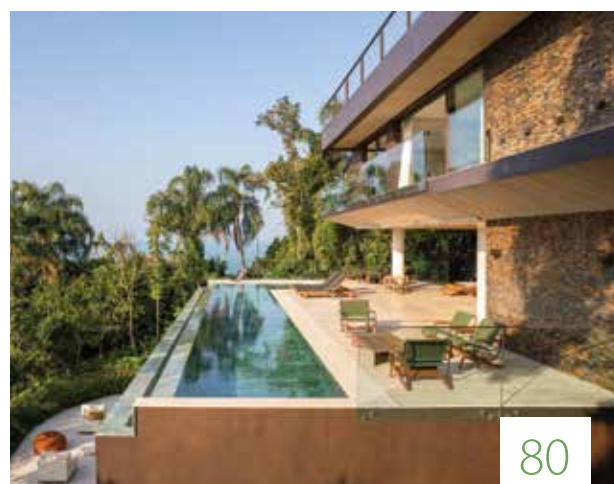
email: sales@husky.co.za
www.huskycarpets.com

HUSKY HO F-P 61

- 44 **MORE TEXTURES**
WOSA Sintered - Stone Showroom
- 48 **MORE TEXTURES**
DOUBLE L GLAZE - design by Chiara Andreatti
- 50 **HELLO SUMMER**
Create the perfect outdoor space - by Stienie Greyling
- 52 **HELLO SUMMER**
Plaisir du Jardin
- 54 **HELLO SUMMER**
A contemporary Mediterranean refuge
- 56 **HELLO SUMMER**
Orchid Pavilion for Casa Wabi
- 61 **HELLO SUMMER**
Outdoor Elegance with a Twist - by Maldini
- 62 **HELLO SUMMER**
The Orchestra Park
- 66 **ALL ABOUT ART**
HAKUTEN's Work, "Beauty from Within", Wins Window Display of the Year at FRAME Awards 2024
- 70 **ALL ABOUT ART**
To Breathe and Pause - The Stellenbosch Triennale invites you to Rehearse for the Future
- 72 **HÅLE HOUSE**
Wentworth-Nord, Canada



62



80

- 80 **BRISA HOUSE**
São Paulo, Brazil
- 88 **CATCHACOMA COTTAGE**
Canada
- 97 **TAIL OF THE DOG**
Mosquito
- 98 **BRIGHT IDEAS**
Nightside NS01 Honoured with 2024 LIT Design Award for Energy Saving Lights

Published by Nylapix (Pty) Ltd
Editorial: editorial@designingways.com
Advertising: Stienie Greyling • 081 846 6214 • stienie@designingways.com
Contributors: Gill Butler • Stienie Greyling
Layout: Christo Van Eeden • 082 442 8176 • beyond@bdstudio.co.za
Subscriptions and Distribution: subscriptions@designingways.com
Accounts: accounts@designingways.com

Twelve issues of **DESIGNING WAYS** are published per year

P O Box 1248, Fontainebleau, 2032.
Telephone +27 (0) 11 791 5995
Facsimile +27 (0) 86 678 8448
www.designingways.com

Advertisements submitted for publication must be high resolution PDF (PDF/X-1a or PDF/X4) and will be printed to European Bruma colour standards. **DESIGNING WAYS** accepts no responsibility for colour reproduction if the supplied material has been incorrectly made up.

DESIGNING WAYS reserves the right to edit, amend and/or abridge any manuscript submitted for publication.



S
C
A
N
D
I
A
V
I
A
N



AN ODE TO SCANDINAVIAN STYLE

Switch off from the outside world and sink into the irresistible finishes of Scandi. An ode to the enduring Scandinavian style, soft, sweeping geometrics, tactile qualities, and a monochromatic colour palette all embody the undeniable charm of this inherently cosy collection.

www.stuartgraham.co.za



Introducing The Forum Hyde Park:
Johannesburg's Newest Premier Luxury Events Venue

The Forum proudly announces the opening of The Forum Hyde Park, an elegant new events venue that combines sophistication with versatility in the heart of Hyde Park, Johannesburg. Perched on the seventh floor with sweeping city views, this stylish venue accommodates up to 400 guests, catering to high-end corporate events, luxury private gatherings, exclusive dinners, and grand banquets.

Chosen for its prime location in Hyde Park - a hub known for high-end shopping and convenient parking - the venue's design is inspired by the lush surrounding trees. The space integrates wood, green accents, and ample natural light to enhance Johannesburg's scenic views. "We selected a soft, warm, neutral palette with green marble accents to add visual interest without overpowering," says Philippe van der Merwe, Co-Founder of Tonic Design.

"Our vision was to create a dynamic, indoor-outdoor space that feels intimate but luxurious," says Glynis Hyslop, Managing Director of The Forum. Her favourite features include the stack-back doors that seamlessly integrate the inside and outside spaces, creating a fluid environment ideal for any occasion. And the beautiful green marble bars on the two levels.

The main area boasts intricate plasterwork, a homage to artist Cecil



INTERIORS & FURNITURE
SHOW JEDDAH

18 - 20 FEBRUARY 2025
JEDDAH, SUPERDOME

YOUR GATEWAY TO THE \$1.4 TRILLION PROJECTS IN SAUDI ARABIA'S WESTERN PROVINCE



BOOK YOUR STAND



Brought to you by:



Organized by:

dmg events

www.interiors-furnitureshowjeddah.com

TRADE WINDS

Skotnes, who originally designed a mural for Hyde Park. Crafted by Tonic Design and brought to life by artisans Dudley & Sons, this distinctive feature brings a touch of South African artistry to the venue. The space is further enriched by two magnificent pieces by Karel Nel, curator at the Norval Foundation, and sculptures by acclaimed artist Walter Oltman.

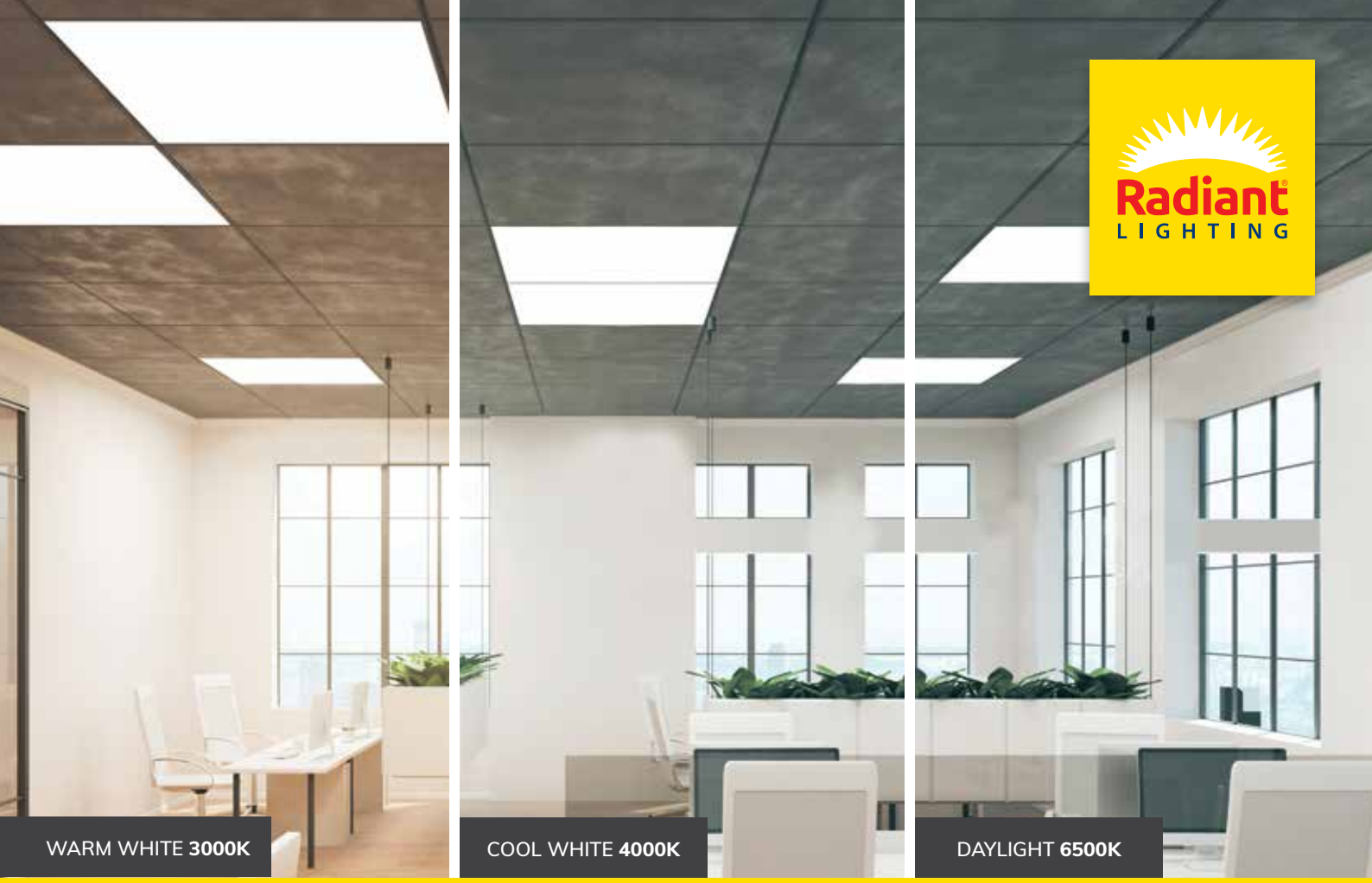
Tonic Design was chosen for their clean, modern aesthetic and their ability to capture the venue's architectural essence. Signature elements include the expansive nine-metre ceiling, large windows, and a beautifully landscaped garden surrounding the reception area, where stack-back windows and doors reveal breath-taking views.

"Our goal was to create an elegant ballroom space with design details that serve as a subtle backdrop for countless future events. The ceiling and frieze design in the main space are focal points we carefully refined. As you move through the venue, volumes open up, and the ceiling details come together to reveal the design story," adds van der Merwe. "Because of its prominent, elevated position, the ceiling's design even draws attention from passing motorists."



This project was one of collaboration and a great team that included contractors Zabicon who pulled off a few miracles within a very tight deadline, Dudley & Son were responsible for taking the ceiling and frieze design and making it even better than imagined, Paul Pamboukian lighting for their

lighting design and Tim Steyn was responsible for the landscaping. The Forum Hyde Park is set to become the premier choice for those seeking a sophisticated, versatile venue for unforgettable events in Johannesburg. www.theforum.co.za



EXPERIENCE COLOUR CHANGING TECHNOLOGY
IN THESE NEW BACKLIT LED PANEL LIGHTS

The three-colour changing technology on our new LED panel lights means you can select from Warm White, Cool White or Daylight settings through a CCT in-line switch. These ceiling lights are flicker-free and available in 3 sizes. All are covered by a 3 year warranty. Radiant Lighting offers an extensive product range to meet your architectural and building project requirements. Visit www.radiant.co.za and let us take your project to the next level.



RPR360

3CCT LED BACKLIT PANEL

Colour Temp: 3000K, 4000K & 6500K
Lumens: 4000lm
Wattage: 40W
Size: 600mm(w) x 600mm(h)



RPR361

3CCT LED BACKLIT PANEL

Colour Temp: 3000K, 4000K & 6500K
Lumens: 4000lm
Wattage: 40W
Size: 300mm(w) x 1200mm(h)



RPR362

3CCT LED BACKLIT PANEL

Colour Temp: 3000K, 4000K & 6500K
Lumens: 6000lm
Wattage: 60W
Size: 600mm(w) x 1200mm(h)



Inline Switch

Entries are now open for Workspace Design Shows first ever
'Workspace Well-being Hero'
which celebrates champions of kindness and resilience

Workspace Design Show is proud to announce the launch of the "Workspace Well-being Hero" initiative, recognising and celebrating exceptional individuals in the workspace design industry who go above and beyond to support the well-being of others through acts of kindness and resilience in their work environments. This initiative shines a spotlight on those who make a tangible difference in workplace culture through selflessness, compassion, and perseverance.

The Workspace Well-being Hero initiative honours individuals who have shown remarkable dedication to creating a positive workplace culture. Whether it's through charitable efforts, meaningful acts of kindness, or overcoming personal adversity, these heroes embody the spirit of resilience and inspire those around them to build a more supportive and inclusive environment.

"Workplace design is more than just creating functional spaces; it is about shaping environments that enhance human experiences and nurture well-being," said Esha Bark-Jones, Event Director of the Workspace Design Show. "This initiative is our way of recognising the everyday heroes whose kindness, strength, and compassion make the workplace a better space for everyone."

The Workspace Well-being Hero initiative seeks to celebrate and elevate those who have:

- Demonstrated exceptional compassion and support for colleagues.
- Led impactful charitable initiatives within the workspace design community.
- Overcome personal challenges, emerging with renewed strength and positivity.

Winners of the Workspace Well-being Hero initiative will be celebrated at the Workspace Design Show, 27 February 2025, where their contributions will be acknowledged among industry peers and leaders.



Registrations are now open for the Workspace Design Show, inviting industry professionals, innovators, and enthusiasts to secure their spot at this premier event dedicated to the future of workplace design. Set to be a gathering ground for creative minds, thought leaders, and decision-makers, the show offers a unique opportunity to explore the latest trends, products, and solutions shaping modern workspaces.

The 2025 Workspace Design Show offers an immersive experience with dedicated spaces and interactive features for attendees. Highlights include: The Recharge Lounge, by M Moser Associates, Sense of Place, a mixed-media show, by Hoare Lea, Wavescape Lounge, by Ryder Architecture, Moodboard Contest Area, by Peldon Rose, Innovation Zone, a space for companies and independent designers to showcase next-generation workplace design, Material Bank Library, a curated selection of innovative materials, Entrance Designed, by Sheppard Robson and Design Talks Lounge, by Gensler.

Attendees can look forward to interactive exhibits, from Brunner, USM, Bisley, Interface, Pedrali, Mute Design, Spacestor, Codutti, Bralco, Forbo, Milani, Mara and many others. The show offers insightful talks, and networking opportunities with leading designers and brands. Don't miss out—register now to be part of an inspiring event that is redefining the landscape of workspace design.

Workspace Design Show brings together the UK's workplace interiors community to network and discover tomorrow's workspaces from 26 - 27 February 2025 at the Business Design Centre in London.

For more information about the Workspace Well-being Hero initiative, including nomination details and event information, visit Workspace Well-being Hero - Workspace Design Show [dw](https://www.workspaceshow.co.uk)

www.workspaceshow.co.uk

workspace design show

27 – 28 FEBRUARY 2024

BUSINESS DESIGN CENTRE, LONDON

Bringing together the UK workplace design community

Taking place at Business Design Centre, Workspace Design Show gathers the most creative businesses, architects, designers and end-user occupiers from around the world. Hosted in the heart of London, Workspace Design Show is the ultimate workplace interiors hub, attracting both local and international manufacturers, brands, and suppliers. For two exciting days, industry professionals and enthusiasts converge upon this remarkable showcase, immersing themselves in a world of cutting-edge design.

This event is a must-attend for anyone in the sector and is free to attend.

- **Unparalleled networking opportunities**
- **Drinks party**
- **Workspace Design Talks, 27 & 28 February**
- **Sustainability Works, 27 February**
- **Occupiers Forum, 28 February**
- **FIS Conference, 27 & 28 February**
- **Immersive, experiential features**
- **300+ interior products**



[workspaceshow.co.uk](https://www.workspaceshow.co.uk)



Chair of the Board
Charrisse Johnston



Ilse Prinsloo



Jocelyn Jones

IID MISSION STATEMENT

The African Institute of the Interior Design Professions (IID) **promotes excellence in the practice of interior design** across the African continent. We help our members **develop the skills** required to provide the best possible design solutions to their clients, we **educate the public** about the contribution interior designers make to society, and we **protect interior designers' right to practice**.

VISION 2025

Internal Relationship Focus: Strengthen our existing network by fostering valuable relationships among members, ensuring we grow together and continue to thrive as a united community.

Networking Opportunities and Events: Connect with us and expand your network with a vast group of designers, suppliers, corporate, and industry professionals. These connections open doors to valuable partnerships, collaborations, and referrals that can accelerate business growth. Join us as we explore a range of topics designed to enhance your skills, expand your business knowledge, and create exciting collaborative opportunities. Strengthen partnerships with other allied professionals, ensuring collaboration across the built environment'

Access to Resources Portal and Workshops: Members receive access to our resource portal that is updated with contracts, fee guidelines structures and other valuable business information. Continuing education, workshops, that keep you updated on industry trends, and best practices - helping you to stay competitive in the market.

Marketing and Promotional Support: We offer platforms for members to promote their work, via our website and social media, and participation in industry events. This can increase visibility and attract new clients, helping businesses grow.

Academic Partnerships: Foster stronger connections with South African universities and international institutions, promoting cross-border collaborations and driving innovation within our field.

IID Members & Tertiary Programmes: Build connections between design firms and academic programmes through guest lectures, workshops, and collaboration, helping to bridge the gap between theory and practice.

Mentorship: Encourage the exchange of knowledge through mentorship between seasoned designers, young designers, business and students, ensuring members are equipped for success.

Getting involved with the IID is probably the most significant contribution you can make to your own career.

Why? It tells people that you're serious about interior design, interior decorating or interior architecture. It indicates your status as a business professional with valuable industry skills.

- The IID is the only registered professional body representing the interior design industry in South Africa.
- Professional Recognition and Status. Membership gives you credibility by belonging to the Interior Design professional body, identifying that you are serious about what you do.
- Professional Contracts and Fees.
- The IID and SACAP Partnership that is continuously growing.
- Free Marketing. Share content in our newsletter: Fridays for the following week's Social Media platforms, 15th of the month for the following month's content. Contact national@iidprofessions.org.za for more information.
- IID Events and Networking. Great opportunity for you to stay visible, exchange ideas and rub shoulders with some of the leaders in the profession.

- Discounted Rates for Design Shows and Workshops, and Relationships with media partners with International presence. The IID is a member of Ico-D (The International Council of Design) which enables the IID to act as a formal contact point between the South African Interior Design Professions and the international design community.
- SAQA & CPD Points. All IID professional members must also engage in continuing professional development (CPD). The purpose of CPD is to ensure professional members maintain the highest possible standards of practice through their commitment to continued learning.
- Being recognised by SAQA means the IID has recognition as a trusted professional body through an Act of Parliament, part of a National database of professional bodies that uphold high standards of competence and ethics, registration of professional designations on the most comprehensive National database of learner achievements, and exposure to best practice through access to fora that improve the functions of professional bodies.



THE AFRICAN
INSTITUTE OF THE
INTERIOR DESIGN
PROFESSIONS

KSA update, January 2025.

Choosing an extractor for your kitchen

Appiances take up a large portion of a kitchen budget but when it comes to an Extractor or Cooker hood we often find that units are specified or chosen based on aesthetics rather than effectiveness. This is why we wanted to focus on the extractor and what exactly should be taken into consideration when selecting or specifying – it is not just looks and price.

An extractor should effectively remove steam and cooking odors as well as airborne grease from the kitchen. If you have not purchased or specified the correct unit, or had it installed incorrectly, your extractor will become nothing more than a glorified noise maker.



When choosing your extractor you must consider five things: your kitchen size and volume, your culinary habits, your method of installation, your budget and your aesthetical preferences.

Kitchen size and volume – if the extractor does not have a powerful enough motor to cope with the volume of air in your kitchen it will be ineffective. To calculate the volume of air in your kitchen and hence the m³/hr capacity you need in an extractor motor you apply the following formula for a closed kitchen with a wall mounted extractor: volume = kitchen length x kitchen width x kitchen height =m³. This formula will ensure the extractor motor, is capable of changing the air in your kitchen ten to twelve times in an hour. For an island extractor you will need a higher rate of air flow than indicated by the formula. If your kitchen is open plan you must work out the total volume of the open space and not just the kitchen area.

Culinary habits – the extractor you choose will be determined by how often you cook, the type of food you cook and the type of hob you have. If you rarely cook and then only plain foods with minimal frying and grilling, a basic unit will be fine, but if you cook regularly with fatty foods and a lot of frying and grilling, then a unit that can duct to outside with a higher capacity motor is vital.

Method of installation – Firstly, what can you accommodate, a wall mounted or

island unit once this is ascertained, you need to consider whether you can duct the unit to the outside or not. Ducting is always preferable as it expels the odours from the home. To duct your extractor either needs to be:

- on an external facing wall so the duct pipe can go straight through the wall to the outside
- be able to reach the ceiling so it can duct out through the roof space.
- be situated a maximum of five metres from an external wall so that a length of duct pipe can be run, with no more than one bend, to the outside either in a cupboard space, a bulkhead or in the ceiling space.

If opting to duct out, you will have to order a ducting kit as an extra, which will consist of pipe (ordered by the metre), clamps and a non-return vent.

If you cannot duct then you will have to recirculate. You must factor in that you will lose about 25% of your motor capacity by recirculating. The extractor will also be noisier if you recirculate. You must also remember to order a recirculating kit, which consists of charcoal filters that must be fitted into the extractor body, and a T-piece that directs the filtered air out of the flue vents. If you do not order this as an extra over and above your extractor the unit will be totally ineffective. It is vital for



effective operation that the airflow back into the kitchen has no obstacles in the way of cupboard units etc. Also, cupboard units either side of the hood should not be too close, as this can create turbulence under the hood, stopping effective operation.

Your budget – As in all things, you get what you pay for with an extractor. The bigger the motor capacity, the quieter the motor, and the more aesthetically pleasing the extractor, the more it will cost. Remember to factor in the cost of installation. Not many people are qualified to install an extractor, and it is recommended to get a list of registered installers from the manufacturer of the unit or the company you have purchased it from. The installation costs of a recirculated unit are not too bad as the installation is fairly simple, however, you will have to factor in the added cost of the recirculation kit, and the fact that you will have the ongoing cost of replacing the charcoal filters every few months. The installation of a ducted unit must ONLY be undertaken by a trained professional, particularly if it is an island unit or a unit ducting through the roof. This will be more costly as it requires the installer to break through walls, ceilings, and in some cases the roof.

Aesthetical preferences – There are a huge variety of extractors currently available on the market, from the most basic box unit, to integrated, to stainless steel canopies, to glass units and most recently, retro styled and coloured units. Remember, this unit can be a focal part of the kitchen design. If you like the idea of something more extravagant, then ensure your kitchen designer knows what you are purchasing so they can make the unit a feature in the kitchen. A good-looking extractor can finish off a kitchen perfectly and add value to the room.

There are a few other very important facts to remember when choosing and installing your extractor. Your extractor should be wider than your hob to ensure



all steam and odour is captured. When installing your unit should be 65cm above an electric hob or 75cm above a gas hob. The higher you go the less effective the unit becomes. Many people worry about the noise level of an extractor. Most extractors are fairly noisy, but only on a high speed setting, and this should only be used for short periods of time. Units that have a very low decibel rating are usually very costly as their motors are insulated.

Many people do not use their extractors properly. In order to get maximum results, the unit must be well maintained and properly used.

- Turn your unit on five minutes before cooking to develop the airflow needed to capture and remove the grease and odours.
- Close the kitchen door if you can.
- Keep the unit on a low speed while cooking, and only turn it up to a higher speed if there is excessive smoke, grease or steam.
- Finally, leave the unit on for five to

ten minutes after cooking to expel leftover odours and grease.

To maintain your unit properly, clean your grease filters every two months. Many of these can go in the dishwasher. Failure to clean them can stop the unit being effective, but also lead to a buildup of foul smells and unhygienic grease above your stove, which can also be a fire hazard. If you are recirculating then replace your charcoal filters approximately every six months. When cleaning the body of the extractor consider the material it is made from. If it is stainless steel it is a good idea, particularly if you live at the coast, to wipe it down with a silicone-based product to stop spot rust.

To summarise, if you are an industry professional, make an informed specification, and if you are a consumer be an educated shopper. Don't just look at cost or looks, remember to order your extras, and ensure the installation is done by a professional.

dw

www.ksa.co.za

Larose Guyon's Saule Collection: A Modular Expression of Nature-Inspired Lighting

Montréal, Canada

The well-established high-end brand Larose Guyon is proud to introduce Saule, a handcrafted lighting collection that draws inspiration from the graceful beauty of the willow tree. Each fixture in this collection captures the essence of nature with its intricate design and organic textures, reflecting their commitment to blending natural elegance with refined craftsmanship.

A celebration of nature's grace, inspired by the delicate beauty of the willow tree, Saule is the latest lighting fixture collection designed to bring the serene elegance of nature into any interior. Each piece in the Saule collection is meticulously handcrafted in Larose Guyon's Verchères, Canada studio, where their talented artisans ensure that every detail embodies the natural world's essence. With hand-formed brass leaves cascading from elegant metal arches, Saule mirrors the gentle sway of willow branches, catching the light and creating

a mesmerising shimmer.

The development of the Saule collection was a year-long journey, as Larose Guyon sought to capture the abstract beauty of the willow tree in a way that felt both elegant and organic.

"It took numerous attempts to refine the design, striving to find the perfect balance between the flowing grace of willow leaves and the fixture's overall harmony. Achieving that balance of refined elegance while maintaining the natural, organic essence of the piece was a challenging but rewarding process," says Audrée Larose, co-founder of Larose Guyon. "The result is a lighting fixture that captures the spirit of nature with timeless sophistication, and a new collection that we are very proud and excited to launch."

This collection marks a new chapter for Larose Guyon's commitment to blending high-end design with nature's timeless



beauty, offering an experience in any space.

Handcrafted with patience and care, like a jeweler's art

"Each leaf in the Saule collection is meticulously cut and hand-formed by our talented team in our Verchères studio, with an immense amount of time, patience, and care invested into every detail," says Félix Guyon, co-founder of Larose Guyon.

The process is akin to the intricate work of a jeweler, where precision and craftsmanship come together to create something truly extraordinary. Every leaf is shaped with love and attention, ensuring that the final piece exudes the delicate beauty and organic flow that defines the Saule collection, making each fixture not just a light, but a work of art.

At the centre of each fixture is a slightly pink glass globe arrangement, reminiscent of a delicate fruit suspended among the branches. Each glass globe is handblown by a skilled glass artisan in Montreal, adding an extra layer of craftsmanship to the design. The globes are crafted with a smaller, soft glass globe nestled inside a larger one, creating a stunning interplay of shapes, textures, and light. The soft, warm glow it emits enhances the organic flow of the design. This intricate design technique results in a unique, layered aesthetic that enhances the organic feel of the fixture, making every piece truly one of a kind. The combination of these two glass elements creates a delicate visual depth that complements the natural elegance of the Saule collection.

The serene movement of the Saule collection

The multiple brass arches in the Saule collection reflect the elegance of tree branches, adding both volume and height to the fixture, as seen in its flowing design. Each arch creates a graceful, sculptural frame that elevates the fixture's overall presence. Inspired by the movement of a mobile, the Saule fixture gently sways with the breeze, bringing a soft, kinetic energy to the space. The brass leaves, draping delicately from the arches, shimmer as they catch the light, echoing the natural sway of willow foliage. This dynamic, yet refined design transforms any room into a serene, nature-inspired sanctuary.

"We wanted to design a fixture that captures the essence of movement in a simple, natural way – just like the gentle rustling of wind through leaves," adds Félix Guyon.

Tailored in small and large sizes for every space

Larose Guyon have developed both small and large versions of the Saule fixture to seamlessly suit a variety of



spaces. Each size is designed to capture the same elegance and organic beauty, while offering flexibility in scale. Whether you're looking to highlight a cosy area, or make a statement in a grand room, Saule provides the perfect solution.

To further enhance its versatility, Larose Guyon have created configurations of one, three, or five fixtures for both sizes. This modular approach allows Saule to adapt to a multitude of settings, whether it is illuminating a long dining table, casting light down a staircase, or creating a dramatic focal point above a round table. With its flexible design options, Saule becomes a captivating choice for any interior, effortlessly enhancing both residential and commercial spaces.

Saule transforms light into an experience that reflects the beauty and calm of nature. Saule is more than just a lighting fixture; it is a handcrafted masterpiece designed to infuse your home with the elegance, serenity, and the organic charm of the natural world.

Floor samples will be showcased in their complete form at Larose Guyon's studio showroom in Verchères, offering visitors a chance to experience the craftsmanship and intricate details up close. This display allows guests to fully appreciate the unique design and quality of each piece in a tangible setting. www.laroseguyon.com/shop





Gervasoni Furnishes the La Locanda alle Vigne Restaurant

Gervasoni has furnished the La Locanda alle Vigne restaurant, located in the prestigious Subida di Monte winery in Cormons, in the heart of the Friulian countryside. The project, meticulously curated by the architecture firm AK ENGINEERING SRL, has resulted in a refined and distinctive space.

Surrounded by 12 hectares of lush greenery, this architectural gem stands out for its minimalist and refined style, meticulously designed to establish a dialogue with the surrounding environment. The structure, entirely clad in wood, draws inspiration from the Friulian concept of the "Fogolar," symbolised by a central fireplace that dominates the space. This feature conveys warmth and hospitality, creating a welcoming and homely atmosphere for guests.

Tradition meets innovation through a large glass wall that provides breathtaking views of the surrounding vineyards, fostering a continuous dialogue between

the interior and exterior. Within this unique setting, Gervasoni has enhanced the interiors with carefully selected furnishings from the Ghost and Gray collections designed by Paola Navone. These pieces are thoughtfully paired with poufs from the Brick collection and the elegant Saia armchairs by David Lopez Quinconces. Together, they create a space that combines contemporary design with comfort and hospitality.

The Ghost 10 sofa, in a deep green, reflects the tones of the forest, while the ice-coloured Ghost 23 chairs and ochre yellow cushions introduce touches of light and vibrancy. The Gray armchairs, with their refined lines, complete the décor, echoing the natural hues of the surrounding landscape: the greens of the foliage and the earthy tones of the soil.

Ghost by Paola Navone

An iconic product from Gervasoni, the Ghost 23 chair is designed with a focus on comfort and practicality. Its



COMMERCIAL INTERIOR

sleek and straightforward silhouette is crafted with a wooden frame and features a polyurethane cover that is easily removable. Conceived to be "dressed and undressed," the Ghost chair enhances the interiors with covers available in various tones and patterns.

The Ghost 10 sofa, built around a lightweight shell with essential volumes, furnishes the spaces of La Locanda alle Vigne with its minimal and slim structure, padded with expanded polyurethane and complemented by soft feather-mix throw cushions in ochre yellow and brown. Its removable cover is distinguished by an oversized green slipcover with exposed stitching that highlights its profile. Warm tones take centre stage, harmonising with an environment where wood and a central fireplace evoke a sense of warmth and domesticity.



Gray by Paola Navone

The spaces are enriched with the Nordic-inspired enveloping seating from the Gray collection, designed by Paola Navone. The Gray 24 chair, with its vintage essence and contemporary design, blends the austere elegance of classic furniture with the simplicity of Nordic forms. This wooden dining armchair features a low, semicircular slatted backrest that complements the chairs and integrates into the cottage-like atmosphere of the restaurant. Its solid wood legs intersect to form a cross-shaped structure.

The Gray 26 armchairs enhance the interiors of La Locanda with their padded frame, removable cover, and exposed stitching, alongside a curved backrest designed to "embrace" the sitter. Paired with the gentle rocking of the Gray 09 wooden rocking chair, Gervasoni's furnishings add character to the





restaurant's homely ambiance. This type of seating, typically associated with a cosy, mountain-inspired domestic setting, is defined by its comfort. The rocking chair stands out with its tall slatted backrest and a soft, loose cushion, emphasising both comfort and style.

Completing the ensemble is the minimalist Gray 23 chair, featuring three wooden slats - two vertical and one horizontal - that frame the seat. The addition of a cushion, matching the grey tones of the other furnishings, softens the design. The chair is paired with the Brick 19 pouf from Paola Navone's collection. Its polyurethane foam-padded structure enhances its softness, while the removable cover, adorned with exposed stitching, outlines its edges with subtle detail.



Saia by David Lopez Quinconces

With its balanced yet enveloping lines, the Saia dining armchair is a classic design reimagined in a contemporary style by David Lopez Quinconces. The name, which means "skirt" in Portuguese, highlights its defining feature: a removable cover that drapes gracefully and elegantly to the floor. Additionally, its refined forms evoke the softness of the feminine silhouette. The gently downward-curved armrests invite guests to sit comfortably, cradled by the high, embracing backrest.

Featuring polyurethane padding and an olive-green cover, Saia enhances the restaurant's ambiance with warmth and comfort, perfectly complementing its sophisticated yet inviting interior.

Photography by Elia Falaschi.

dw

www.gervasoni1882.com/en



Shapes



Shapes

Shapes are the form or outline of an object.

by Stienie Greyling



Everything we see in the world around us has a shape. We can find different basic shapes such as the two-dimensional square, rectangle and oval or the three-dimensional rectangular prism, cylinder and sphere in the objects we see around us.

In 2025, curved furniture continue to redefine living room aesthetics with its inviting shapes and gentle lines. Moving away from the rigid, angular designs of the past, such designs introduce a fluid, organic feel to interiors. Think elegantly rounded sofas, nesting or crescent-shaped armchairs and tables with smooth, flowing edges. Curved sofas, armchairs and coffee tables add a sense and movement to the space, making it feel flowing yet dynamic.

The living room interior design trends of 2025 are all about blending comfort with cutting-edge looks.

Nostalgia will play a significant role in living room trends. Vintage and retro styles already made a strong comeback with a modern twist. Mid-century modern furniture with its clean lines and functional design continue to be popular, but expect to see more eclectic mixes of styles from different decades.

Shapes will continue to be rounded and curved, but less minimalistic, more comfortable, inviting and lived-in. It is worth the time to explore how curved forms, modular systems and artistic

shapes will bring both elegance and utility to a space in the home or office.

The commitment to sustainability continues to be a driving force.

Consumers are increasingly aware of their environmental impact, hence prioritising furniture, décor and living room design ideas that minimise carbon footprints. Reclaimed wood, bamboo and recycled metals remain at the forefront. Expect also to see more innovations, like modular pieces that can be easily disassembled and repurposed, reducing waste even further. Shifting to eco-friendly doesn't mean compromising on style. Sustainable materials to hand-in-hand with sleek, modern designs or vintage looks, creating a blend that appeals to the environmentally conscious and design-savvy alike.

Shapes and texture in the bathroom.

There has been a shift toward curvaceous furniture throughout the home and bathrooms are catching up. This year, is set to embrace softer, more organic profiles through furniture, tiles and décor.

Shape and texture is a key focus in bathroom trends this year. Bathroom design will continue to move away from the dominance of harsh, angular lines in favour of soft, more organic shapes.

Incorporating more rounded forms into bathroom design is an evolution of

minimalism. Where minimalism once meant boxy shapes and sharp corners, today's interpretation is more fluid and connected to nature.

Curved countertop designs are having a resurgence in the kitchen.

They say it's the details that make or break a scheme. When it comes to kitchen countertops, that detailing is taking the shape of ever more adventurous edge profiles. The edge profile of a kitchen countertop is a finishing touch worth spending some time on to get the right one to best enhance the kitchen scheme.

Curve appeal have never been so popular for the home, and sweeping, countertop edges will add a touchy-feely, ergonomic silhouette to the kitchen. Beautifully organic, rounded edges immediately soften a space and bring feelings of calmness to the kitchen. These curved edges remind us of our natural surroundings, making us feel grounded and serene. Curves are inviting and are especially suited to family homes or those entertaining moments when guests can comfortably sit around the kitchen island.

There is a great deal of rounded-edge kitchen hardware now available. No longer is kitchen hardware square or rectangular in shape with sharp edges. A softer direction with circles, ovals and even rounded edges on cabinet pulls will now be seen in kitchens in 2025. dw



The Artistic Legacy of Ken Scott in Rugs and Tapestries from Carpet Edition

Carpet Edition has translated Ken Scott's vibrant motifs into the language of textiles, transforming them into a vast collection of rugs, flowers and tapestries which recount the fortunate intersection between design and fashion, two creative worlds which continue to get closer, united by reciprocal affinity.

The Ken Scott Collection pays homage to the famous painter and eclectic designer who left his mark on the creative era of the 60s and 70s.

Flowers, close to the heart of the visionary gardener of fashion, geometric patterns, and animal prints, are the chosen subjects for this collection which crosses the boundaries of interior design to transform into pieces which carry an invaluable artistic legacy.



Animalier
Serpenti



Geometric
Ysoy



Geometric
Castelbarco



Animalier
Safari



Floral
Lady S



Animalier
Safari



Floral
Frida



Geometric
Infinito



Geometric
Labirinto

Every single piece reflects the creative spirit of the American designer, masterfully combining the potential of fabrics with an in-depth study of materials (such as New Zealand wool, Hardtwist, Linen and Tencel), production techniques (multi-level hand tufting) and detailing (velvet pile, bouclé, shag and 3D carving). The result is a collection of rugs and tapestries with stunning dynamic and three-dimensional effects.

The Flower collection, composed of eight shaped flowers in various dimensions Eula, Doktor Zinn, My Lady, Frida, Scarabeo, Vanità, Ipomea 2 and Lady S, celebrate the beauty of Ken Scott's favourite flower varieties.

Seven of these models (My Lady, Frida, Scarabeo, Vanità, Ipomea 2, Lady S ed Eula) are also available in 100x100 cm tapestry versions, designed to hang on the wall and admire as true pieces of art. Eula is also available in a square 200x300 cm version.

Ken Scott's energetic geometries and bold exploration of colour, influenced by early 20th century artists such as Sonia Delaunay, Paul Klee and Mark Rothko, live on in

Geometric pieces Fannie, Infinito, Ysoy, Castelbarco, Labirinto and Manhattan NYC which are offered as rugs in sizes 170x240, 200x300, and 250x350 cm and tapestries in 30x30 and 100x100 sizes.

The Animalier collection represents the bold and creative side of Ken Scott, who was also a pioneer in conceptualising and directing fashion shows. Emblematic of this is his famous Circus Collection, inspired by "Circo" in 1968, a revolutionary event which left its mark on fashion at the time.

Within the collection, animal print motifs Safari and Serpenti are offered in tapestry versions (30x30 and 100x100 cm) and rugs. The Safari comes in the classic dimensions of geometric rugs (170x240, 200x300 and 250x350 cm), while Serpenti distinguishes itself for its unique oval shape, sized 190x240 cm. [dw](#)

www.carpetedition.com
www.kenscott.it

Kreoo

Marble seating

Benches, armchairs, chairs and ottomans entirely made in natural stone or accessorised with cushions in leather, fabric or enriched with wood essences. Kreoo's design for the seating world is expressed in the designs of Christophe Pillet and Enzo Berti with different collections, each associated with one or more types of marble. Holly, Sterling, Ever and Stars are the new-in pieces, signed by the French designer.

The first is conceived as an important armchair, whose shell is carved from solid blocks of Travertino Paglierino or Silver Travertino. This feature outlines in absolute continuity. It has a soft shape, modeled into the material, completed by cushions that accentuate its enveloping effect and ensure ergonomics.

It is suitable for external or internal environments, such as Sterling. This one is more compact, and it is available in Travertine, Calacatta Carrara, Bianco Carrara, or Emperador Light. The backrest of the armchair, defining its base as well, is created by the combination of curved stone parts. The thin empty band at the centreline is the identifying sign of its design. The seating surface and the structure are in the same material, creating a monolithic and extremely pure image.

Essential aesthetic returns in the Ever bench, stillborn from the collaboration



between Kreoo and Christophe Pillet. It allows three seats, marked by stitching leather cushions of customisable covering, held in place by the thin borders on the short sides. Featuring geometric joints between slabs of different thicknesses, Ever can be customised in one of the seven marbles from the catalogue.

All these seatings are perfect in a living room or in public projects. Stars is too. It is a unique piece of furniture that recalls the "matryoshka" concept. Two marble pieces fit into the profile of a third larger, identical one. They can be used as seats, support elements, or coffee tables.

In Oasi, marble is worked in overlapping layers, creating an organic and natural seating system, designed by Enzo Berti. The Travertino slabs become separate horizontal layers, with a porous effect and different dimensions. The three possible sizes of Oasi are completed on the upper level by inserting an aged Larch top, shaped and modeled for maximum comfort. www.kreoo.com

www.kreoo.com





Albed

functional and decorative metal doors

Satin-finished, lacquered, with precious galvanic finishes or natural: metal is conquering the world of product and interior design in an obvious way, drawing new decorative possibilities. Thanks to the consolidated know-how in working with this material for door systems and partitions, Albed translates this trend into functional collections that can be customized and adapted to any project and interior requirements. Celine, Quadra and Ri-trait 8b explore the use of aluminum and make it a decisive aesthetic component; as does Solo, the modular and versatile walk-in closet, which is also available free standing.

The Celine door series, designed by Paolo Festa, takes the geometric decorativism of early 20th century industrial glazing and turns it into a complete technical system that includes hinged, flush or framed, sliding, even concealed, solutions and partitions. Celine's door panel is crossed by thin aluminum profiles, available in natural or with gilded, bronzed or lacquered finishes, which divide its surface into offset rectangular portions. These can be customised in glass with different finishes: neutral, etched, pleated, reflective, mirrored, satin or with decorative



textures, including metallic, on the entire surface, part of the catalogue of more than 90 material proposals from Albed.

Quadra makes versatility its emblem: the panel is available as a single-surface, single-glazed, double-glazed or hollow-core panel, as well as in regular squares with aluminum frames. Available in hinged, framed or flush-to-wall versions, sliding also concealed or with a ceiling track, with a swiveling or pivoting panel, it can also be designed as a partition wall with safety glass, ideal for open space office settings to divide rooms without separating.

Ri-trait 8b features a door panel entirely traversed by parallel and dense aluminum strips with vertical and horizontal

orientation to the frame. The design idea and the resulting decorative texture take inspiration from typical Japanese screens, which separate rooms while maintaining a certain permeability between them. Custom-made, with even the possibility of reaching flush with the ceiling, Ri-trait 8b is available in pull and push casement versions also flush with the wall, sliding, with automatic operation, and as a partition wall, strongly decorative.

Finally, Solo is the modular and versatile walk-in closet designed by Albed, infinitely customisable in modules, layout and accessories. It is also provided in a freestanding version, and its structural distinctiveness becomes its distinctive aesthetic character, with

aluminum uprights, available in bronzed, golden or lacquered finishes, which are made prominent and support closed or open compartments for storing clothes and accessories.

www.albed.it





Upper West Side Triplex

New York, United States

This brownstone apartment, steps from Central Park, is the pied-a-terre for an empty-nester blended family who reside primarily in Seattle, with a palette drawn from Pacific Northwest tones of greens, blues, deep grays, and white oak paneling. The clients had occupied the rear garden duplex for a number of years when the front triplex became available. The two units connected only at the garden level, with front stairs leading up to the parlour and down to the cellar, and rear circulation leading down to the cellar and out to a two-level outdoor garden.

The design approach sought to blur the boundary between the two units, while creating private suites at different levels that would enable visitors to come and go independently. The primary living spaces and bedroom suite were located on the garden level. Divisions between the units were removed to provide a clear view from the front through to the garden at the rear. The living room at the front was centred around a working fireplace, while white

oak shelving surrounds the street-facing windows. The stairs connecting the three front levels were resurfaced and screened with a reeded glass wall. A wallpapered powder room features a seaside scene, a custom soapstone vanity, and blue-green penny tiles. A white oak tambour banquette with a black wood table and white oak chairs creates an informal dining area. White oak reappears in the kitchen, where the oak island is surfaced in a terrazzo slab. A wall of deep blue-green cabinets, inset with brushed copper, is lined with a fantasy soapstone work surface. The rear façade was replaced with a glass door and sidelight. The door opens out onto a bridge over a cellar areaway that was added to allow the living spaces to connect directly to the garden without going through the bedroom.

In the primary suite, the deep blue-gray bedroom walls are brightened by a white oak slat headboard and integrated nightstands. The oak slats continue in the bathroom, where soapstone, terrazzo, and white porcelain penny tile provide a mix of colour, pattern, and texture.

A white oak stair leads down to a second family room on the lower level toward the rear. There, a teal blue wall wraps over the ceiling to define the sitting area, which is flanked by a terrazzo-lined bar. The floor is surfaced in terrazzo tile that wraps up the walls to provide a durable and waterproof surface below grade. A copper Japanese soaking tub enjoys a view of the sky through doors leading to the garden. The rear guest bedroom is lined in a mural wallpaper with a playful woodland scene. In the bathroom, wood-look porcelain lines the shower.

The reeded glass wall conceals the front stair, which leads down to a work-from-home space on the lower level. There, mural wallpaper depicting a tree canopy envelops the room, while in the bathroom, a bright green tap punctuates the white and navy walls. Up the stairs from the garden level, a loft-like sitting room features a playspace wallpapered in an underwater scene concealed behind blue-gray shutters. The bathroom is tiled in forest green and ecru porcelain.

Technical sheet

Living Room:

- “Icarus” by Andrew Zimmerman (Sears Peyton Gallery)



SHAPES

- Custom coffee table
- **Sofa:** Benchmade Modern
- **Rug:** Hatsu
- Compass Chair from Industry West
- Slit Side table by Hay
- Disco Side Table by Basta
- “Pine Point” by Poogy Bjerklie (Sears Peyton Gallery)
- **Powder room:** Wallpaper by Anewall, Bedrosian porcelain penny tiles
- **Garden Bar:** Mirror by AYTМ, Wall sconces by RBW
- **Dining:** “Inclination” by Karin Schaefer, Table by Lulu and Georgia, Buddy Chairs by BluDot, Bell Pendants by Normann Copenhagen
- **Kitchen:** Veronese Multicoloure Terrazzo by Artistic Tile, Fantasy Soapstone by ABC Worldwide, Custom kitchen cabinets, Cedar and Moss flushmount lights
- **Primary Bedroom:** Chair by Lulu and Georgia, Cedar and Moss light fixture
- **Primary Bath:** Custom terrazzo vanity, Custom soapstone by RGNY, Precision sconces by Kelly Wearstler, Bedrosian porcelain penny tiles



- **Lower family room:** Gus Modern sofa, Coffee table by West Elm, “Parish Hill” by Michael Abrams (Sears Peyton Gallery), Copper soaking tub by Signature Hardware, “Enter Stage Left” by Karin Schaefer (Sears Peyton Gallery)
- **Rear lower bedroom:** Wallpaper by Rebel Walls, Slit side tables by Hay, Arch light by Hay
- **Front lower bedroom:** Wallpaper by Rebel Walls, Desk by Dims, A+R table lamp, Anthropologie rug, Hoist sconce by RBW
- **Front lower bath:** Tile by Heath, Sink by Nameeks, Vola Faucet, Chip sconce by RBW
- **Parlour room:** Acuario Wallpaper by Wallpaper from the Seventies, Cirkus Wall sconces by AGO
- **Parlour bath:** Zia porcelain tiles, Bedrosian porcelain penny tile, Venus sconce by Cedar and Moss
- **Photo credit:** Gieves Anderson [dw](#)

www.baaostudio.com/residential/upper-west-side-triplex



Roche Bobois

In 2025, the trend will continue to be towards curves and shapes in furniture and decorative accessories.

Roche Bobois presents here some of its pieces that will help give your interior a soft, welcoming spirit.

It's important to feel good at home using the right shapes and materials.

Consult us for the colours and materials of your choice. Did you know that earth tones are fashionable this year?

Aqua:

The deceptively simple shape of the Aqua table conceals the incredible craftsmanship that is used to achieve the impressive challenge of designer Fabrice Berrux - making a marble base shaped like a drop of liquid.

With the white Carrara or black Marquina marble bases, Aqua can either be monochrome with a colour coordinated Fenix-coated top, or contrasting with a black or white top. The Bardiglio Gray version is monochromatic but plays on the beautiful warm grey tones of this unique marble.

Here, a round dining table in two diametres. The collection also includes a cocktail table and small pedestal tables reminiscent of roly-poly toys.

Arobase:

The Arobase sofa by Antoine Fritsch & Vivien Durisotti is a versatile seat with a generous curve, somewhere between a large armchair and a small sofa. Dressed in a fur-look fabric with a soft, plush feel, it



combines the comfort and non-conformism of rounded shapes and "doudou" materials so dear to the Seventies.

Sense:

Designed by Studio Roche Bobois

A line of enveloping sofas in an atypical format. The curves of these sofas allow for different seating depths. At the ends, the backrest creates an alcove for snuggling up or, on the contrary, for stretching out to one's full length.

Celtic:

A blend of 1950s influences and Asian inspiration, Sacha Lakic's Celta bookcase features a walnut structure whose softened, graphic lines sculpt space with lightness. It plays with the contrasts of the wall, and its tapered shelves are enlivened by oblique book supports. Reduce text-CELTA - Large bookcase

dw

www.roche-bobois.com/en-ZA

More Textures



More Textures

by Stienie Greyling

Everything should have a texture, think velvet, tiles, pattern, brickwork and natural stone.

Nothing should feel flat. Textured elements introduce depth, character and a sense of warmth to any room, encouraging individuals to engage with their surroundings on a sensory level.

Natural and handmade materials continue to be popular. Materials like stone, reclaimed wood, linen and other natural materials that bring warmth, textural richness and authenticity to a space will become more popular in 2025.

Natural stone brings an earthy, timeless quality to interiors through texture, luxury and a sense of permanence. Marble, granite and slate can be used in various ways, from countertops and flooring to accent walls. Each of these materials enhances the visual

and tactile experience of a space, making it feel grounded and sophisticated. Pair them with warm wood tones to create a balanced and inviting atmosphere.

Plain walls are a thing of the past. In 2025, expect to see an explosion of texture in interior spaces. Wallpapered ceilings, wood panelling and decorative plaster finishes will add depth and interest to a room.

Consider using textured paint or wallpaper to add dimension to walls. Depending on the style, products like stucco or textured finishes can evoke a rustic charm or a modern elegance.

Earthy palettes.

A key trend for 2025, earthy palettes are all about creating calm, grounded interiors that feel connected to nature while promoting an air of quiet luxury.

We will be seeing a movement toward muted, dustier tones. Think soft ochre, sage green, warm terracotta and muted mushroom taupe. These colours have an effortless sophistication and work beautifully as a base for layering other textures and materials. Consider combining tones with organic materials like raw linens, plaster finishes and matte ceramics for spaces that exude an understated elegance.

Metal accents.

Incorporating metal elements, such as corrugated steel or brushed aluminium, adds an industrial flair that can enhance modern spaces.

Whether used as wall cladding, or ceiling tiles, metal introduces a bold texture that reflects light and add a contemporary edge.

As textured walls and ceilings become increasingly popular, these materials offer exciting possibilities for homeowners and designers alike. They enhance a space's visual appeal and create textile experiences that invite touch and interaction.

Embrace the trend and let your creativity, flow, transforming a home into a textured haven that speaks to the future of design.

For a softer touch, fabric wall coverings or upholstered panels can provide warmth and sound absorption, making the space feel cosy and inviting.

Don't stop at the walls, ceilings offer an underutilised canvas for introducing texture. Coffered ceilings, bead board ceilings, or even painted wooden beams can draw the eye upward and create an architectural statement. Depending on the desired effect, a textured ceiling can make a room feel larger or cosier.

Consider incorporating textured fabrics like velvet, linen or boucle in furnishings. These materials add visual interest and create tactile experiences that invite touch.

Lighting plays a crucial role in showcasing textures. Use warm, ambient lighting to highlight the unique features of textured walls and ceilings.

Consider adjustable lighting options to create different moods that accentuate the tactile qualities of the chosen materials.

Future Trends: What's next for textured design?

The emphasis on textile experiences reflects a broader movement towards creating spaces that engage the senses and foster emotional connections.

Furthermore, advancement in technology will allow for more personalised designs. Customisable textures created through digital fabrication will empower homeowners and designers to express their unique style.

Smart materials that respond to light and sound may also emerge, adding an interactive component to textured surfaces.

dw



Layering different textures, such as a plush area rug paired with a sleek leather sofa or knitted throw pillows, add depth and complexity to a design.

Accessorising is another excellent way to introduce texture into a space. Choose decorative items such as woven baskets, textured vases or sculptural art pieces that catch the light and draw the eye.



Hybridity is the hero of the much-awaited Plascon 2025 Colour Forecast

For 2025, Plascon flips the script to harness the power of polarities and mixed states in its much-awaited annual Colour Forecast. Rather than focusing on a single colour, a colour combination, or seasonal shifts, it is the theme of hybridity that takes the day - or the night, for that matter - for 2025.

Unexpected, evocative colour sets that reference the beauty of our local context will scintillate in the months to come. The theme of hybridity runs through four carefully considered colour families: Bright, Dark, Natural and Neutral. Each colour family is based on the meeting of opposites, creating a commanding effect that is more striking than the sum of its parts. Further distinguishing the Forecast from the format of previous years, Plascon takes the theme of hybridity a step further, extending an invitation to combine colours across the family groupings to create new possibilities.

'After consulting with leading trend researchers, International Trend Institute

(ITI), we have taken a very different direction for 2025. We understand the industry is used to the convention of having a single colour of the year, or even a colour combination of the year, and we share in this ourselves, but we're just not feeling this in the zeitgeist for 2025,' says Plascon Brand Manager Kristel Dreyer.

'With so much flux in the world right now, we can't see our way to dictating a single hue that will be meaningful for everyone, everywhere, and all at the same time. With the increasing melding of digital and physical realms, we feel hybridity is the state everyone shares. Rather than one way of being or doing, for 2025, we're pleased to share a multiverse of colour with you. We are trusting in our decision that an open-ended rather than finite approach to colour for next year is what people will relate to most!' she says. 'The spirit of the 2025 Colour Forecast is co-creation, it's in how you interpret and bring the colour families to life yourself. It goes way further than just a single colour of the year.'

According to trend researcher Chris Reid of ITI, 'From a conceptual level, the zeitgeist is all about multiplicity right now. No-one is any one thing any more. We change identity the way we change outfits. So the most relevant or top-of-mind colour isn't fixed for as long as a year. Maybe we'll be able to be more definitive about a single-minded colour of the year when our identities and thinking coalesce more and the world is less in flux, but for now it's all about playing with possibility.'

Without any further ado, here are the four enticing colour families that invite you to make your own choices.

Bright: Digital x Physical

Leaning into the playful irreverence of online culture, the Bright colour family is as vivid as its name suggests. These hues express energy and extraversion through mood-boosting soft neons and digital fluorescents. They are perfect for those who wish to master the art of the unexpected in their interiors, or simply

want to design a room that makes a statement. Included in the set are pared-back versions of four of the colours; these are more subtle, but undoubtedly imbued with the same lively spirit. They can be paired with their electric counterparts but they're also strong enough to stand alone. Even when used sparingly, this colour family is local and current. With one foot in the future and another in the past, it raises a hat to a Capetonian context in the form of the vibrant colours of the historic homes lining the streets of the Bo-Kaap.

Dark: Past x Present

Regency era opulence meets sleek contemporary design to produce the Dark colour family. Its jewel tones and rich leather colours have been selected to build tone-on-tone spaces with incredible depth or to bring a sense of grounding to a room furnished in softer palettes. The darkest colours play the role of classic black in contemporary design and this simple swop can transform the feel of a room by adding an undertone of old world-luxury. In step with South African trends which are starting to favour lavish finishings over stark, cold minimalism, the Dark colour family is

poised to make a lasting impact on local audiences in 2025.

Natural: Organic x Manmade

Inspired by the unexpected synergy at the intersection of nature and the built environment, colours drawn from naturally occurring organic pigments and cultivated construction materials form the basis of the Natural colour family. The seven colours in this grouping are effortlessly evocative, creating a sense of calm and a feeling of oneness with nature.

Beyond being gentle on the eyes, this colour family is in line with the international Japandi trend, a blend of Japanese and Scandinavian craftsmanship and balance. Building on this, the Natural palette encapsulates intentional combinations and intuitive design, with the human connection to nature tying them together.

Neutral: Hard x Soft

Neutrals are a perennial staple bringing lasting elegance to interior and outdoor spaces. In Plascon's 2025 Neutral colour family, they are reimagined and shaped by soft industrial design and genderless fashion trends. Mirroring the mood of the defined grey shapes of the Zeitz Museum

of Contemporary Art Africa's silos and the versatile colour and form of local unisex clothing brands, this colour family is built on pigmented neutrals that are defined yet flexible. The grouping of colours plays with contrast and harmony, offering a movement away from pure minimalism towards purposeful warmth and noticeable nuances. Concrete, wood and steel tones combine to tell a tonal story, but each colour is just as capable of acting as a neutral base for other combinations.

In response to a world that offers more options than ever before, Plascon's 2025 Colour Forecast puts a new spin on the definition of choice. It offers a permission slip to replace 'or' with 'and', rejecting the rigid rules that once dictated interior design to embrace hybridity and create constant possibilities for the future.

By paying close attention to local and global trends, the four colour families offer a glimpse into the next phase of our country's diversity, integration and celebration of its differences as well as its similarities. It places the power in the hands of the individual to make and remake spaces that continue to evolve. www.plasconcolour.co.za

www.plasconcolour.co.za



WOSA Sintered Stone Showroom

Shanghai, China

This WOSA stone showroom in Shanghai transports visitors through an artistic journey of diverse materials. Distinct structures showcase an array of stone varieties and their uses. A white stone veil guides entry to a sanctuary of black stone and curved golden stairs. Deeper within, suspended stone sculptures and mirrored walls coupled with digital storytelling, immerse guests in the stone's narrative.

In a repurposed 580m² factory in Shanghai, this WOSA retail space surpasses conventional sintered stone showrooms by seamlessly blending art, architecture, and commerce to create an immersive experience.

Visitors are greeted by distinct small buildings that showcase diverse lightweight stone materials and construction techniques. The entrance features a suspended translucent curtain crafted from white, thin sintered stone slate. Inside, a black stone-clad sanctuary





leads to a curved staircase enveloped in golden stone slates. A metallic VIP chamber with an intricately tiled wooden interior awaits, evoking the sensation of navigating through a diverse metropolis.

Further exploration reveals a showroom without boundaries, where stone volumes seemingly float, mirrored ceilings reflect, and LED screens depict the story behind each material. As visitors ascend a few steps toward the end of their journey, they encounter an interior landscape adorned with volcanic-like formations that foster a sense of playfulness. Within this landscape, a contemporary stone sculpture serves as a gathering spot and bar counter, allowing visitors to convene and discuss incorporating these materials into their own spaces.

This WOSA showroom leaves an indelible impression, altering visitors' perception of a lightweight sintered stone showroom. It also elevates stone tiles to the realm of art by showcasing a wide array of materials and seamlessly merging aesthetics, craftsmanship, and spatial exploration. dw

Technical sheet

- **Location:** Shanghai, China
- **Client:** WOSA Ltd.
- **Chief Designer:** Manuel Lam
- **Design team:** Scarlett Li
- **Lighting Designer:** Manuel Lam
- **Project completion date:** 2025
- **Photography and video credit:** The Volks Design Team

www.thevolksdesign.com



DOUBLE L GLAZE

design by Chiara Andreatti

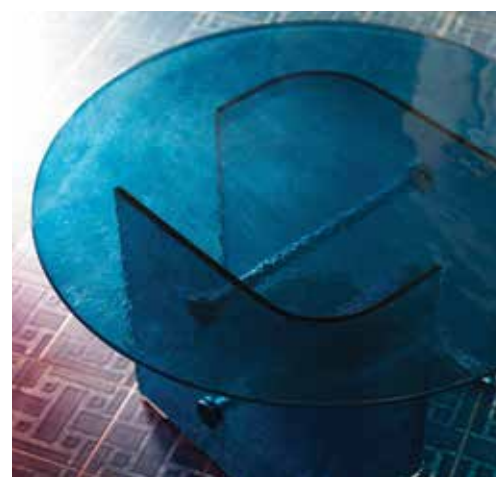
Potocco presents the Double L Glaze coffee tables designed by Chiara Andreatti: a colourful new variant made entirely of glass, available in three sizes.

Proposed in the colours Honey, Cherry, and Blueberry, this version joins that proposed for outdoor use with a steel base and porcelain or stone top, and the one for indoor use with a metal base and marble top.

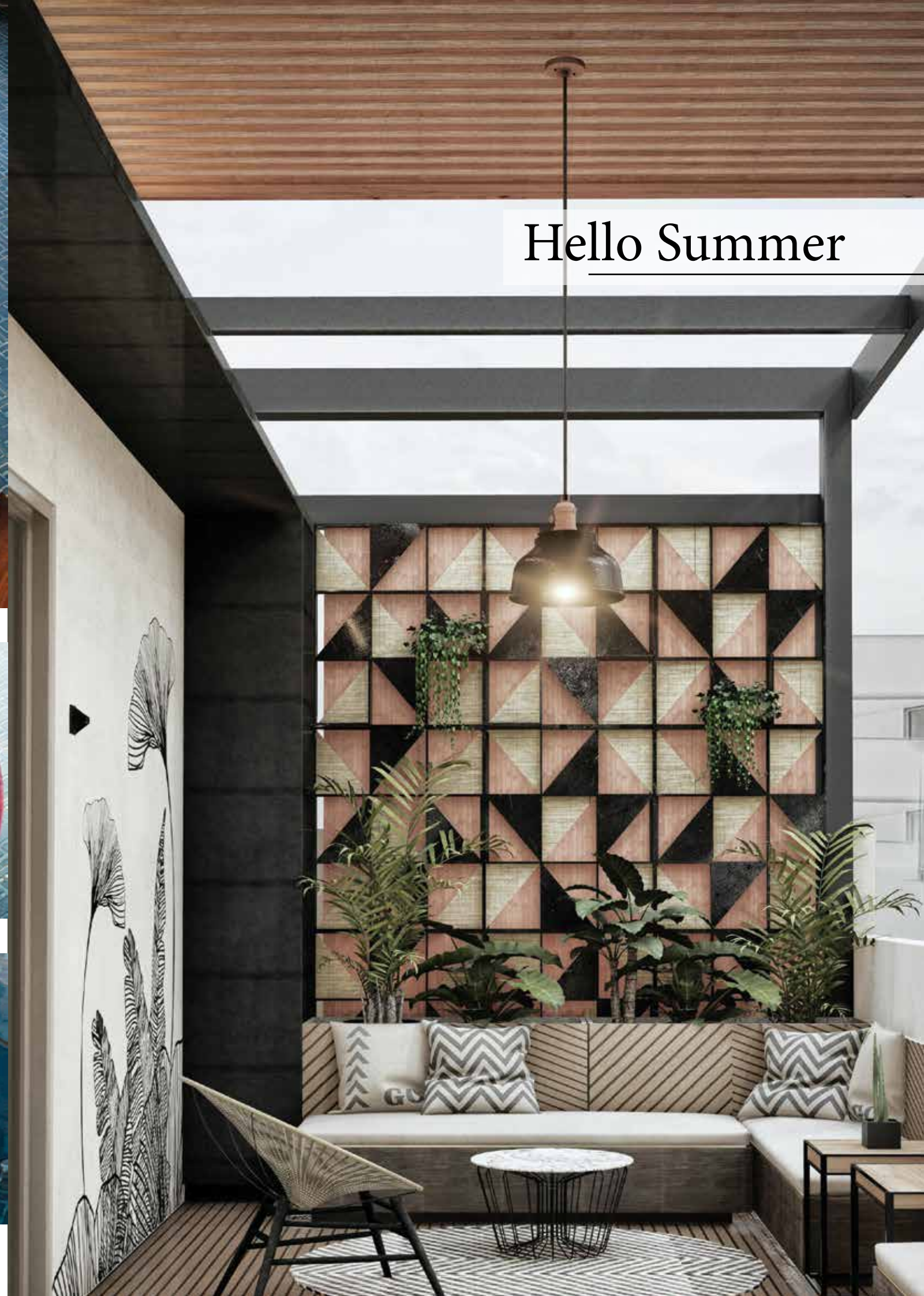
The Double L collection has a feminine, minimalist aesthetic, light but characterised by precious workmanship and refined details. Composed of two curves held together by two RAL-dyed metal tie rods, the base supports the round top while becoming a distinctive element of the design.

dw

www.potocco.it



Hello Summer





Hello Summer

Create the perfect outdoor space.

by Stienie Greyling

The great outdoors is calling and 2025 is shaping up to be a transformative year for outdoor living spaces.

Gone are the days of single-use garden spaces. Multifunctional garden rooms remain ever popular for 2025 due to their versatility and adaptability to different outdoor living needs. Whether looking to create space for a home office, a yoga studio, a music room, a teenage den, or a garden gym, investing in a multifunctional garden room will take outdoor living to a whole new level.

As a huge part of outdoor living surrounds a love of the natural world, a move towards sustainability is essential. In 2025, expect eco-friendly materials like reclaimed wood, permeable paving and solar-powered lighting to take centre stage. For those with a keen design

eye, there are endless options to make sustainability look stylish.

What's a huge part of outdoor living? Outdoor dining!

As alfresco dining becomes a year-round activity, outdoor kitchens are hotter than ever. These setups range from fully equipped kitchens with pizza ovens and grills. Outdoor kitchens are a great option for summertime outdoor living and they are gaining more popularity than ever. They offer shelter from the elements – cool shade in summer and warmth in winter. Outdoor cooking and dining can continue rain or shine.

Mood lighting.

The right lighting can transform a garden into an enchanting retreat. In 2025, expect to see more creative use



of LED lights, fairy lights and lanterns. Solar-powered options are particularly popular, offering both style and sustainability. Lanterns and candles, whether real or battery operated, can create a warm and cosy glow for those looking to bring a touch of romance or relax inspired comfort to their outdoor living experience.

Smart outdoor lighting systems are also gaining traction, offering app-controlled features to adjust brightness, set schedules, or even sync with music for a fully immersive experience.

Bold colours and patterns.

Neutral tones may dominate interiors, but bold colours and patterns are making a splash in outdoor design. Vibrant cushions, patterned tiles and colourful planters can bring energy and personality to a garden.

For those who would like to be daring with colours, 2025 will offer a wide range of possibilities: emerald green and ruby red are not only conquering the world of fashion, but also the world of interior design.

Mustard yellow and petroleum blue are also preparing for a return to the spotlight, inspiring unexpected combinations. Experimenting with strong tones will be the key to creating visually striking outdoor living spaces while still maintaining a balance between the various furnishing elements.

Choose jewel tones and geometric statement patterns, or splash the summer

pastels all around. Mixing and matching textures is in.

Composite decking.

Many homeowners have moved away from wooden decks in favour of composite decking, which is a sustainably-made combination of recycled wood and plastic that can last as long as 50 years. While wood decks are initially a cheaper option, they require ongoing maintenance, such as staining, painting and repairs that can add up over the years.

Composite decking is largely warp-and-stain-resistant and requires far less upkeep. This allows families to spend more time enjoying their decks while adding to the long-term value of their homes.

Stylish outdoor furniture.

The right furniture can make or break an outdoor space, in 2025, the focus is on pieces that are as strong as they are functional.

When it comes to outdoor furniture, natural and organic materials are leading the way. The tendency is to create a harmonious connection with nature effortlessly. These materials look beautiful, while their durability and weather resistance make them perfect for outdoor use.

The days of stiff, square tables is something of the past. This year, it's all about creating a welcoming atmosphere where conversation flows freely. Look for outdoor tables with rounded edges and organic shapes.

The ever popular siesta chair continues to be a favourite for a good reason. These reclining beauties offer the ultimate in relaxation, allowing the family and guests to soak up the sun in pure comfort.

Looking for something truly unique? Keep an eye out for air chairs. These innovative designs use a breathable mesh fabric to create a supportive yet comfortable seating experience, perfect for those long summer days. dw



Plaisir du Jardin

Since 2020, the emphasis has been on the importance of having a well-designed, fully equipped, relaxing outdoor space. A space that reflects the indoors and offers the same comfort and aesthetic, whilst blending seamlessly with its surroundings and encompassing trending tones and textures. The emphasis is on wellness, family activities, and calmness in nature, infused with colour and texture, greenery, and water.

In 2025 we will hear about Biophilic Design, but what exactly does that mean to us as we get our patios ready for the wonderful year ahead. Biophilic Design involves bringing nature closer to us using natural elements: recycled wood, plants, sustainable materials, water features and organic shapes, making 2025 the year to invite Nature in.

With outdoor furniture becoming indistinguishable from its indoor counterparts, we have the unique opportunity of creating unforgettable spaces and although materials and fabrics are more robust for the outdoors, the feel and the aesthetic are far more refined, with the flow between indoor and out becoming more seamless.

One of the easiest ways to bring the outdoors in is with the use of lush greenery. Create a living wall, or refresh your terracotta pots with seasonal flowers, herbs and succulents that reflect



your décor aesthetic, and if you have a particularly dark corner where no plant could survive, try an artificial tree.

Create wellness areas in the garden by placing a bench, swing chair or hammock deep in the greenery where one can find solace and time for reflection, or throw an outdoor rug down on the lawn, and

whether you use it for yoga, for meditation, or just to lie on whilst drinking coffee and reading, it will be a time that will rejuvenate you and significantly add to your wellbeing.

The aim in 2025 is to create a space where you can unwind and recharge, surrounded by nature. Your wellness area is where a water element such as fountain or small pond will ensure tranquility. As people could be spending considerable time in the wellness area, reading and reflecting, it is a clever idea to add aromatics plants to round off the experience. Think lavender, jasmine or a well-placed yesterday today and tomorrow.

We all know that in 2025 Earth tones are in, that neutrals set the décor base, and that textures and materials bind everything together. We are particularly excited about this trend; What could speak to our Company more than a beautifully curated patio, sustainable hard-wearing furniture, and the beauty of nature's colours. But nature is not bland or boring so let us get creative with rich terracotta, timeless taupe, deep forest greens alongside olive green and rusty browns. Add your personality to the mix by adding your favourite colour to

the space in accent pieces, scatter cushions, and throws.

Also stealing the limelight this year is the integrated outdoor kitchen. Outdoor kitchens have become more and more sophisticated over the decades and gone are the rickety outdoor braais and wobbly chairs. Today we embrace a fully functioning outdoor kitchen, along with a pizza oven, grill, fridge and sinks. A well equipped outdoor kitchen means never having to walk inside for any of your braai necessities. A well equipped dining space flows effortlessly off the outdoor kitchen into a lounging area, with each area demarcated with a hard-wearing outdoor carpet to fully define the function of the individual area. Living in South Africa affords us the opportunity to use our outdoor spaces for most months of the year. So let's make 2025 is the year the patio becomes a place to live, a natural extension of your indoor spaces, expressing your design style, oozing charm and cosiness whilst inviting everyone in for a day full of outdoor activities, good food and great family times.

dw

www.plaisirdujardin.co.za



A contemporary Mediterranean refuge

by Auñón Cabrera and Pasqual Giner on Spain's Costa Blanca

Interior designer María José Auñón Cabrera and architect Pasqual Giner unveil their latest project in Calpe, a picturesque coastal town in the province of Alicante: a striking villa with a Mediterranean soul. This villa emerges as an oasis of organic forms, noble materials, and natural serenity, offering breathtaking sea views in harmony with the Costa Blanca's tranquility.

Architect Pasqual Giner, in collaboration with the interior design studio Auñón Cabrera, has completed the comprehensive transformation of this villa perched on the shores of Calpe. Situated on the pristine Costa Blanca, this recently acquired family home has been meticulously reimagined as a space that seamlessly blends Mediterranean tranquility with cutting-edge contemporary design. The project transcends conventional architectural approaches, creating a living environment that responds to modern inhabitation through organic forms, noble materials, and an extraordinary dialogue with natural light.


The intervention boldly dissolves the barriers between interior and exterior spaces. Expansive windows frame breathtaking sea views, flooding the interior with an enveloping luminosity.



A continuous polished cement floor extends from the interior to the porch, reinforcing spatial fluidity, while walnut wood elements in cabinetry, kitchen, and window frames introduce warmth that beautifully contrasts with the overall understated finishes.

Curved lines dominate the villa's architecture, seen in the arches of the porch and built-in elements like niches and a bespoke concrete sofa. This approach fosters a welcoming aesthetic and visual comfort, encapsulating the project's essence. Curved recesses house indirect lighting and curtain systems, creating a clean, functional atmosphere while emphasising the purity of the design.

The project represents a creative vision by Pasqual Giner Arquitectura and Auñón Cabrera that perfectly captures a contemporary refuge responding to evolving living patterns. By balancing Mediterranean serenity with sophisticated design principles, they have created a space that is both an architectural statement and a deeply livable home. The villa stands as a testament to the power of thoughtful design: a haven that bridges landscape, light, and human experience.

Photography credit: Pablo Caulin 

www.aunoncabrerainteriorismo.com

Orchid Pavilion for Casa Wabi

Puerto Escondido, Mexico

The Orchid Pavilion, designed for Casa Wabi, is located on the outskirts of Puerto Escondido, between the sea and the mountains. It is a wooden structure - permanent, sustainable, and lightweight - dedicated to the conservation of orchids in the Oaxaca region, celebrating the strong interplay between the biological and cultural diversity of the landscape.

As the firm approached the design of the Orchid Pavilion, their research pointed toward creating optimal conditions for orchids to thrive: a humid, partially shaded, and well-ventilated environment. This led to the development



of clear technical features that ensure the pavilion's functionality. However, the deeper inspiration for the project came from exploring the relationship between the Japanese philosophy of Wabi-Sabi and the rich traditions of the Oaxacan coast. Wabi-Sabi - which finds beauty and harmony in simplicity, imperfection, and unconventionality - resonates with the region's vernacular, locally sourced materials, and the exceptional craftsmanship of its artisans. This connection became the foundation of CCA | Bernardo Quinzaños' design approach, along with an unexpected guiding concept: the Japanese word Ikigai.

Ikigai ('a reason for being') can be translated as the happiness derived from living with purpose. The term combines iki (meaning 'life' or 'alive') and kai (meaning 'effect, result, fruit, or worth'). This philosophy - centered on finding joy in purposeful activity - aligned perfectly with the pavilion's goals of fostering a meditative, harmonious space for both





orchids and visitors. By creating a space that embodies Ikigai, the pavilion invites guests to reconnect with their own sense of purpose amidst the serenity of nature.

The design prioritises three main elements:

- 1. Functional simplicity:** Twelve concrete-based humidifiers, utilising gravity, create a controlled humid environment ideal for orchids from the Oaxacan coast. This system ensures the orchids thrive without manual watering.
- 2. Sustainable materials:** Locally sourced wood and custom-made concrete ceramic pieces, fired in high-temperature kilns, form the structure. These materials echo the vernacular traditions of the region, while adhering to sustainable practices.
- 3. A sanctuary for reflection:** Beyond its technical role, the pavilion aims to evoke a profound sense of Ikigai in its visitors. Entering the space, one breathes in the humidity, hears the gentle drops of water, and feels the crossing winds - a sensory

experience that fosters introspection and harmony.

The central element supporting orchid growth is the carefully maintained humid environment. Pyramid-shaped, water-filled concrete basins crown the wooden structure, releasing tiny droplets that drip to the ground, where they are collected by permanently humid concrete trays. This process not only sustains the orchids, but also eliminates the need for manual irrigation. The breeze and warmth allow the plants to absorb moisture directly from the air and surfaces, mimicking their natural habitat.

For guests of Casa Wabi, the Orchid Pavilion offers a tranquil refuge after a long walk. The shared water - consumed by both people and orchids - becomes a metaphor for humanity's connection to nature. The sound of dripping water resonates with natural cycles and human activity, creating a contemplative journey that reorients visitors to the humble root of life.

Fundación Casa Wabi is a non-profit organisation that fosters dialogue between contemporary art and local communities across its locations in Puerto Escondido, Mexico City, and Tokyo. Rooted in the Japanese philosophy of Wabi-Sabi, the





foundation's mission is to promote social development through art via five core programmes: residencies, exhibitions, pottery, film, and a mobile library.

In recent years, the foundation has inaugurated several notable projects, including a Ceramic Pavilion by Portuguese architect Álvaro Siza (Pritzker, 1992), a Guayacán Pavilion by Mexican studio Ambrosi Etchegaray, a Henhouse by Japanese architect Kengo Kuma, a Compost Pavilion by Paraguayan architects Solano Benítez and Gloria Cabral, and, more recently, a high-temperature oven and gardens by Mexican architect Alberto Kalach. Each of these pavilions provides functional spaces that support the foundation's programmes, while celebrating the convergence of art, architecture, and community.

Technical sheet

- **Project Name:** Orchid Pavilion
- **Location:** Puerto Escondido, Oaxaca, México
- **Client:** Fundación Casa Wabi
- **Office:** CCA | Bernardo Quinzaños
- **Architects:** Bernardo Quinzaños
- **Design Team:** Santiago Vélez, Begoña Manzano, Andrés Suárez, Miguel Izaguirre, Florencio de Diego, Carlos Cruz Ay, Javier Castillo, Carlos

Molina, Cristian Nieves, Abigail Zavaleta, Fernanda Ventura

- **Project Completion Date:** February 2024
- **Photographer:** Rafael Gamo, Jaime Navarro

- **Model Photography:** Vanessa Nieves, Arturo Arrieta, CCA Centro de Colaboración Arquitectónica

dw

www.cca.mx



Outdoor Elegance with a Twist

by Maldini

Step into a world where playful innovation meets timeless outdoor sophistication with the Nami and Cobble Collections by Qeeboo. Exclusively available through Maldini, these collections redefine al fresco living, blending artistic charm with functional design.

The Nami Collection

The name "Nami" derives from the Japanese word for "wave," and true to its inspiration, the collection exudes a sense of movement and fluidity. Each piece is a sculptural masterpiece, designed to echo the beauty of rippling water and the natural rhythms of the outdoors. The chairs, with their graceful curves and enveloping design, invite you to sink into comfort while enjoying a moment of serenity outdoors. Made from eco-friendly polypropylene and featuring a gently textured finish, these chairs are as durable as they are delightful. Perfect for dining under the stars or lounging poolside, they bring a sense of effortless sophistication to any outdoor setting.

The chairs pair seamlessly with the table, which mirrors the same wave-inspired elegance. Their minimalist yet striking profiles make them versatile enough to suit a sprawling garden terrace or a cosy urban balcony. Whether hosting a summer soirée or enjoying a quiet morning coffee, the Nami Collection elevates every outdoor experience.

The Cobble Collection

Inspired by the organic textures of nature, this collection brings a modern yet grounded aesthetic to your outdoor spaces. The chairs, with their tactile surfaces and robust build, add a distinctive charm to any patio or garden. Paired with the innovative tables, which feature integrated bucket compartments perfect for keeping drinks cool or storing essentials, this collection is as practical as it is stylish.

The Cobble Collection is designed for versatility, effortlessly blending functionality with striking design. Whether you're setting up for a relaxed family barbecue or an elegant garden party,



Nami Collection



Cobble Table by Qeeboo

this range provides the perfect backdrop for outdoor living.

A Touch of Playful Elegance

True to Qeeboo's design ethos, both collections embrace injecting personality into their pieces. Available in a variety of vibrant and earthy tones, these ranges allow you to create an outdoor space that's as unique as you are. Opt for bold pops of colour to energise your patio, or stick to neutral hues for a calming, understated ambiance.

At Maldini, we understand the art of balancing luxury with livability. The Nami and Cobble Collections perfectly embody this ethos, offering durable, weather-resistant designs that don't compromise on style.

Transform your outdoor spaces into havens of relaxation and style with these pieces Qeeboo. Visit our showroom at 12 Kramer Road, Kramerville, Sandton, to experience these collections firsthand, and let us help you design a space that celebrates the beauty of outdoor living. www.maldini.co.za

www.maldini.co.za

The Orchestra Park

Suzhou, China



The Orchestra Park in Kunshan's Huaqiao Economic Development Zone covers 8,500 square metres between two high-density residential areas and along the confluence of two rivers. With mature camphor and dawn redwood trees and nearby wetlands, the project faced the challenge of integrating a skateboarding area, preserving the natural woodland, and adding essential amenities like restrooms. The design prioritises ecosystem preservation, creating a functional, modern park for all age groups while providing a green, natural retreat. This project transforms an urban vacant lot into a vibrant recreational space that serves the public and is beloved by the community. We aim to create a livable green space that meets residents' diverse needs while providing a rich natural experience - a green oasis and social hub in the neighborhood.

The Jiangnan Silk and Bamboo music tradition, featuring instruments like the bamboo flute and erhu, is known for its graceful melodies and was recognised as part of Kunshan's intangible cultural heritage in 2007. Inspired by this cultural heritage, our design incorporates smooth lines and natural forms that reflect the

rhythms of the music. The park's layout uses curves inspired by these instruments, blending recreation with a three-dimensional representation of the music, offering residents a harmonious mix of nature and culture.

We fully respect the existing conditions of the site, aiming to preserve the natural woodland and the undulating terrain to the greatest extent. The overall layout is structured around the symbolic forms of silk and bamboo, with a circular jogging path running through the entire park, connecting Xugongqiao Road and the two adjacent residential communities to the north and south. This path also divides the park into two main areas: a riverside green belt and a vibrant recreational zone.

The design of the riverside greenbelt prioritises the preservation of existing woodland and vegetation, using a minimal intervention approach. We added a waterside viewing platform along the riverbank and created winding exploration paths under the natural canopy, featuring playful sound-interactive installations to enhance visitors' experiences.

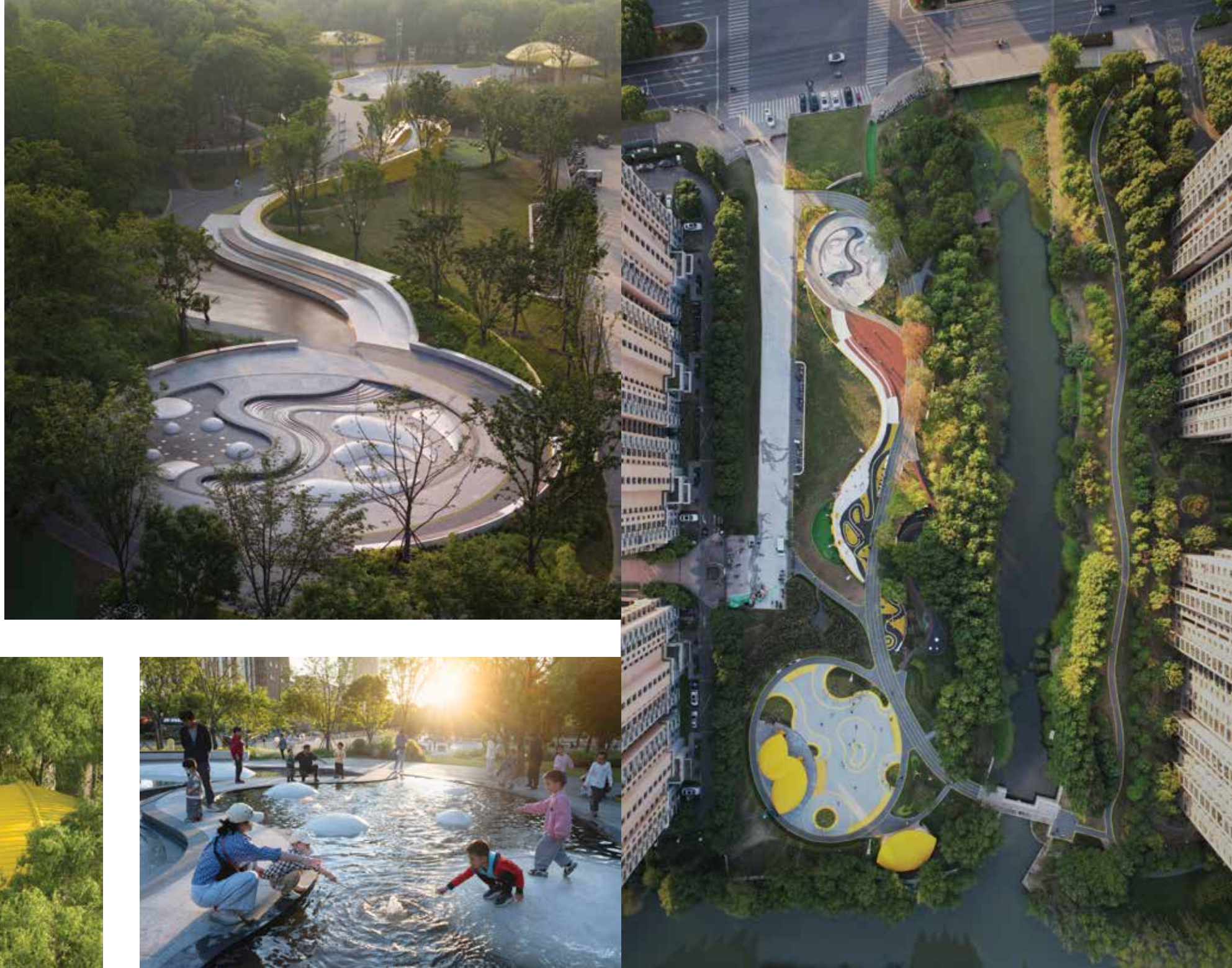
This green belt seamlessly integrates natural woodland, planting design, and functional spaces, resulting in a layered park environment with a balanced mix of open and dense areas, distinct seasonal changes, and a clear thematic focus.



This design provides residents with a lush space for relaxation and a unique opportunity to connect with nature.

The vibrant recreational area utilises the site's natural topography to transform the two-dimensional outlines of Jiangnan silk and bamboo instruments into an abstract three-dimensional experience. It features a series of unique interactive facilities, including a skatepark, climbing area, fitness playground, open-air theatre, bamboo grove pathways, musical fountain plaza, and a small music classroom. These spaces appeal to residents of all ages, encouraging exploration and engagement with the environment.

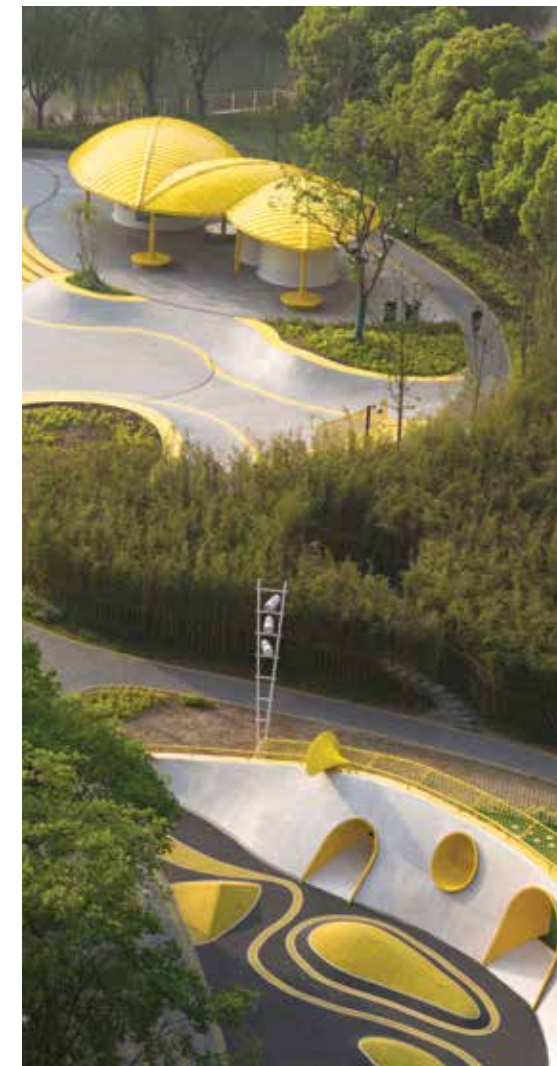
The Orchestra Park integrates diverse activities while preserving Huaqiao's cultural heritage. This community park offers spaces for viewing, leisure, and exploration, quickly becoming a favourite destination for local residents. With activities for all ages, it serves as both a natural retreat and a vibrant gathering place.



Technical sheet

- **Project Name:** The Orchestra Park
- **Completion Year:** October, 2023
- **Gross Built Area:** 8500m²
- **Design Firm:** SoBA
- **Company Website:** <https://www.sobarchitects.com/>
- **Firm Location:** Suzhou, China / Seattle, WA
- **Lead Architects:** Wang Ruo, Tang Haiyin
- **Architecture and Landscape Design:** SoBA
- **Design Team:** Liao Zhexuan, Li Chuanzhang, Yiqing Wu, Yuan Wang, Xiao Yunxuan (Intern), Zihao Chen (Intern)
- **Clients:** People's Government of Huaqiao Town, Kunshan City
- **Construction Documentation**
Local Design Institute: Jiangsu Aoyang Ecological Garden Co., Ltd.
- **Photo credit:** Holi 

www.sobarchitects.com



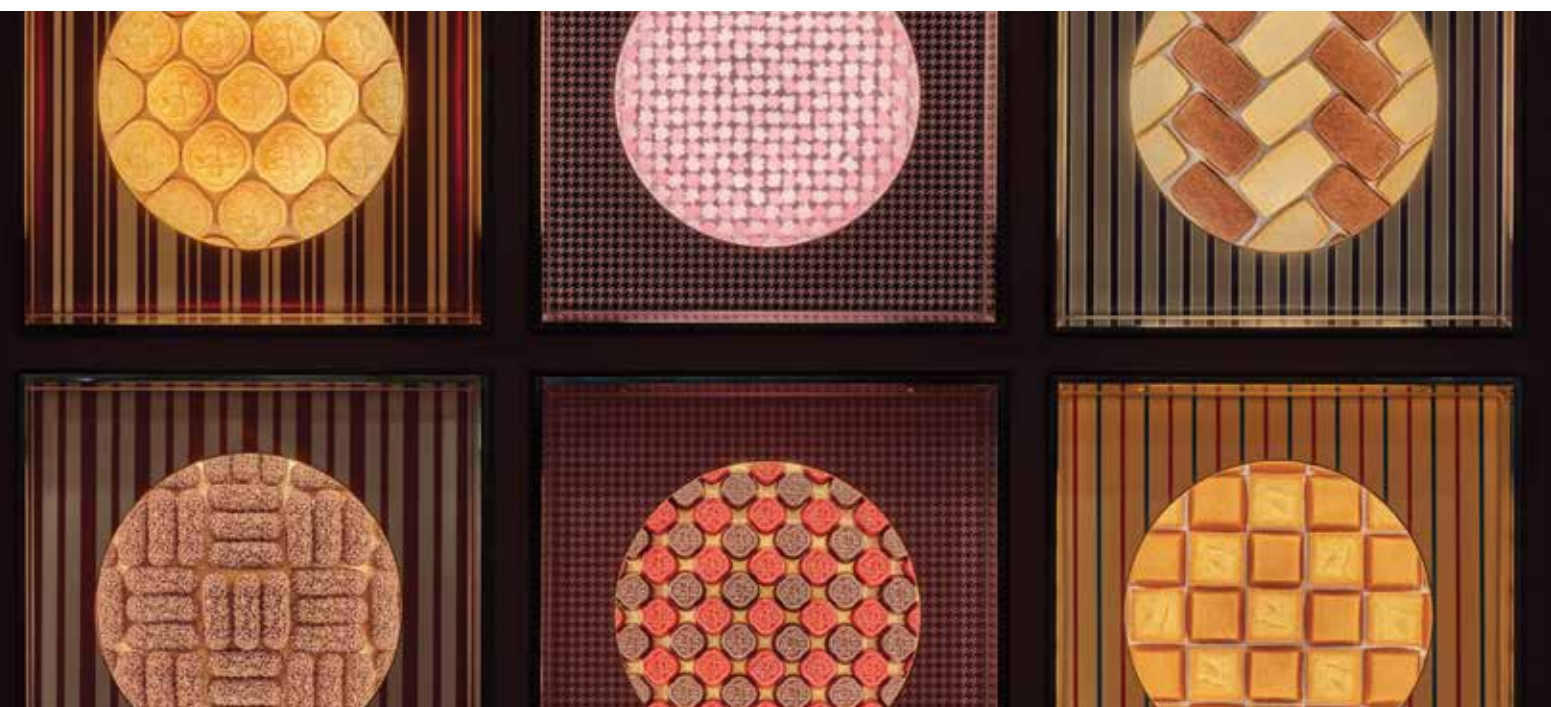
HAKUTEN's Work, "Beauty from Within", Wins Window Display of the Year at FRAME Awards 2024

Tokyo, Japan

Beauty from within is a Christmas window display project showcased at the Shiseido Parlour Ginza Main Store in Tokyo in December. Traditional Japanese umbrellas (WAGASA) were crafted and decorated to represent a Christmas tree and wreath.

Shiseido is known for valuing the concept of "bringing out people's inherent beauty". For this project, the concept was directed towards traditional craftsmanship, aiming to highlight the inherent beauty of traditional crafts.

Japanese umbrellas (WAGASA) were selected as a motif for their high affinity with Christmas. Traditionally, WAGASA symbolises "protection against evil spirits" and "good luck", similar to the meaning of Christmas trees and wreaths, creating a natural compatibility.



ALL ABOUT ART

WAGASA embodies Japan's aesthetic principles. They are sustainable, utilising locally sourced materials, and are crafted by hand. Even if damaged, they can be continuously repaired and used for generations.

The beauty of WAGASA lies in the structure of their usually hidden "bamboo ribs" and decorative "ornamental threads". These elements were brought to light to reveal their hidden beauty within.

The slender and flexible bamboo ribs, arranged neatly and systematically, showcase the unique beauty of traditional Japanese craftsmanship. The golden thread decorations shimmer like Christmas lights, illuminating the streets of Ginza.

After the exhibition ended, the umbrellas were returned to the umbrella craftsmen, while the trees and wreaths reverted to new umbrellas and parts and tools for repairs.

Through this display, the project demonstrated the untapped potential and sustainability of traditional craftsmanship, while celebrating its aesthetic and cultural significance in a modern context.

Technical sheet

- **Location:** Ginza, Chuo City, Tokyo, Japan



- **Designer:** Shiseido Creative + Hakuten
- **Client:** SHISEIDO Co., Ltd.
- **Finishes:** Hakuten Corporation

Project Team-

SHISEIDO CREATIVE Co.,Ltd:

- Yoji Nobuto (Creative Direction)
- Yukihiro Kaneuchi (Art Direction)

Hakuten Corporation :

- Aki Ito (Design)
- Tomoki Nabeta (Design)
- Yuto Mitani (Technical Direction)
- Kohei Kumazaki (Production Management)
- Seishiro Tate (Project Management)
- Kaiki Shingu (Production)


A-KAK Co., Ltd:

- Tomohiro Akagawa (Technical Direction)

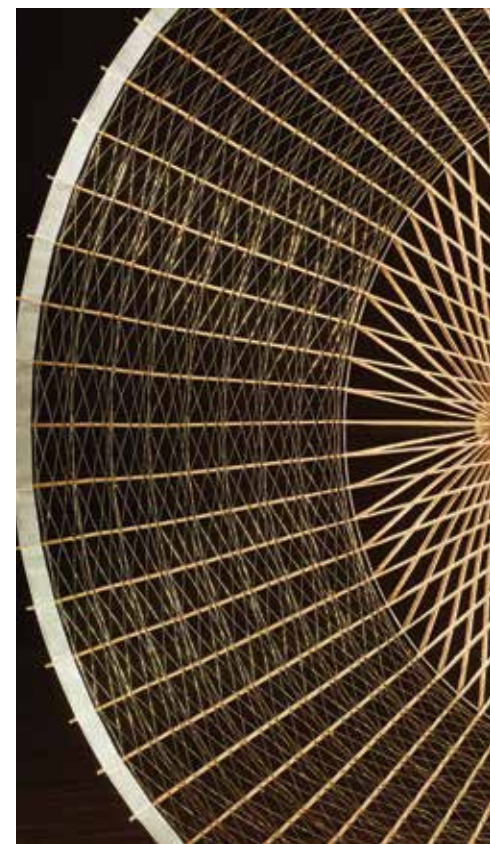
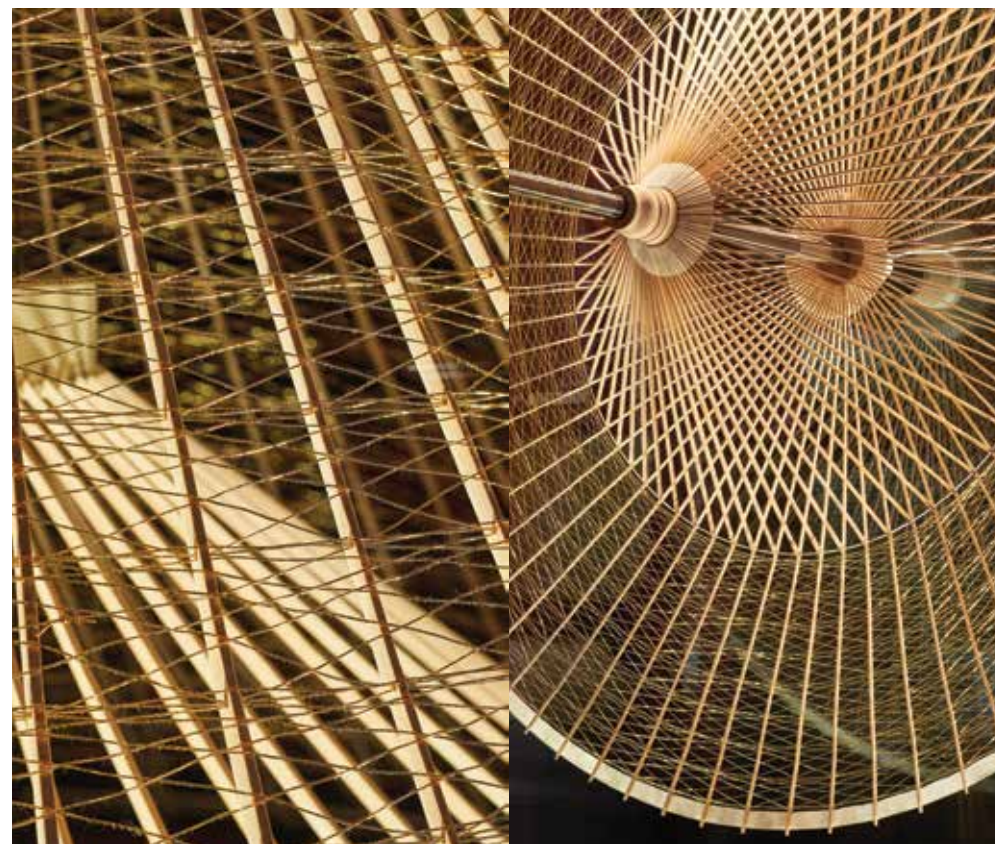
HIYOSHIYA :

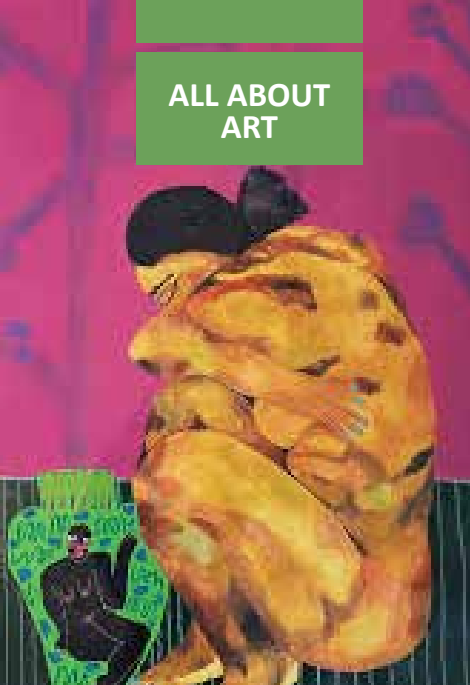
- Kotaro Nishibori (Artwork)

Others :

- Masayuki Hayashi (Photography)
- Ippei Suzuki (Film Production) 

www.hakuten.co.jp/en





To Breathe and Pause

The Stellenbosch Triennale invites you to Rehearse for the Future

The Stellenbosch Triennale, a pivotal event in the global art calendar, will once again transform the historic town of Stellenbosch into a dynamic, open-air gallery from 19 February to 30 April 2025. The brainchild of the Stellenbosch Outdoor Sculpture Trust (SOST), a non profit organisation and supported by Outset Contemporary Art Fund, the Triennale, that is free to the public, promises to be a profound exploration of art, community and existence under the evocative theme by

sociologist, sangoma and Chief Curator Khanyisile Mbongwa titled, BA'ZINZILE: A Rehearsal for Breathing.

The Stellenbosch Triennale debuted in 2020 with a bold vision: to elevate Stellenbosch as a premier destination for multidisciplinary art in Africa, and to create a platform where public art and creativity engage critically with society. The inaugural event set a high standard with its array of provocative installations and performances that challenged visitors to rethink their surroundings and themselves.

Building on this foundation, the 2025 edition seeks to push boundaries even further. As Chief Curator Mbongwa explains, "For this Triennale I want us to enter into a rehearsal space as a way of imagining how we can co-create in the real world, how exhibition making in itself is a rehearsal space for the things we want to do. And as such, I have invited artists to make their work on-site over a ten day period that can be recycled or disintegrated back to land after the Triennale, so as to minimise my carbon footprint by not transporting artworks back and forth. In this way, we get to enact a playfulness in the making and witnessing the work." This commitment to sustainability and process forms part of the curators' practice of Care & Cure. Mbongwa - a Stellenbosch university alumnus who works within public realm, interventions and interdisciplinary practices - in this project heeded the call from her ancestors to mediate on

themes that explore spirit, breath and improvisation. "I am in the labour of my purpose. My work is always expansive and a deep-time conversation with amadlozi (ancestors), uNkulunkulu (God/Source), and Abahlali (the collective of beings); as I move through and in the world, I'm invited into different geographical locations and called into spiritual ancestral indigenous conversations," explains Mbongwa.

A Tradition of Artistic Innovation

The inaugural Stellenbosch Triennale took place at the start of the COVID-19 global pandemic, which cut the Triennale's duration short and changed many lives. Project Director and Trustee, Andi Norton, draws parallels to this year's exhibition sub-theme of rehearsal. "We had no idea that it would only be open for such a short time in 2020, we had worked hard and sacrificed so much and to have it all be shut down so soon was devastating. It was only after a year or two that we could start exploring doing another one." Norton continues, "Only now can we look back on it and see the incredible rehearsal space that it was for us. Through the theme, the curator is giving us, the organisers and artists, permission to experiment and play."

The theme, BA'ZINZILE: A Rehearsal for Breathing, invites artists and audiences alike to contemplate the act of breathing — both a fundamental physical process and a metaphor for resilience and survival. "Breathing in states of duress,

breathing through wounds," reflects Mbongwa in her curatorial statement, "we persist, we insist, we improvise our existence in a world that often feels like it's losing its breath."

Informed by the Nguni concept of UKU'ZINZA — being grounded and calm — the theme explores stillness as a mechanism for survival, a strategy for imagination, and an act of aliveness. In a time when breathlessness is a global experience, the Triennale positions itself as a space for reflection, recovery, and preparation for a different future.

A Dynamic and Interactive Experience

Unlike traditional art exhibitions, the Stellenbosch Triennale 2025 will be a living, breathing entity, constantly evolving over its two-month duration. The intention is to invite our visitors to enter a rehearsal space with us, where some works will exist in a space of improvisation, some in the space of composition and intervention, others in exploration - in the ways we negotiate our breath and ultimately our aliveness.

Assistant Curator Dr Mike Mavura adds, "We wanted the artists to think of breath in multiple ways in relation to the human body and to start to think of breath in expanded ways; what happens when you breathe deeply? What happens when you are short of breath? And then, what happens when you can't breathe?" This conceptual framework will be evident in the diverse array of mediums on display, from visual art and sculpture to sound installations, performance, and dance.

A Curated Selection of International Artists across Multiple Venues across Stellenbosch

The 2025 Stellenbosch Triennale will feature an impressive line-up of artists from the African continent and beyond. Among the artists participating In The Current include: Alexandre Kyungu Mwilambwe (Democratic Republic of Congo), Aline Motta (Brazil), Aziz Hazara (Afghanistan), Lebohang Kganye (South Africa), Simphiwe Ndube (South Africa), Torkwase Dyson (USA), Thierry Oussou (Benin) and William Miko (Zambia).

"We will be showcasing a truly diverse range of practices," notes Mavura, "from sound, sculpture, and installations with plant life to paintings, photography,

dance, and performance. The aim is to activate all the senses, providing a holistic experience that challenges and delights."

The featured artists in On the Cusp include: Astrid González (Colombia-Chile), Helen Zeru (Ethiopia), Kasangati Godelive Kabena (Democratic Republic of Congo), Manyaku Mashilo (South Africa), Nandele Muguni (Mozambique), Simphiwe Buthelezi (South Africa), Takunda Regis Billiat (Zimbabwe) and Tuli Mekodjo (Namibia).

A Rehearsal for a New World

The Stellenbosch Triennale will take place at the Oude Libertas precinct and across multiple venues throughout the town, turning Stellenbosch into a curated public laboratory for creative expressions and engagements. The collaboration with the Stellenbosch Outdoor Sculpture Trust and other local institutions ensures a rich, textured experience that reflects the unique cultural and natural landscape of the region, recognised for its vineyards and academic excellence.

This year's Triennale is more than an exhibition; it is a call to action, a rehearsal for breathing anew in a world filled with challenges and possibilities. "Art becomes an infrastructure for cure and care," says Mbongwa, "posing the question: if death is the given condition, how do we prepare to live?"

The Stellenbosch Triennale 2025 invites you to be part of this journey - to breathe, reflect, imagine, play, and rehearse for the world we want to create.

The Stellenbosch Triennale takes place from 19 February - 30 April 2025 at Oude Libertas, the Woodmill, Rupert Museum

and Stellenbosch University Museum. Entry is free to the public.

The featured artists in From The Vault: Kemang wa Lehulere, Sisonke Papu, Lungiswa Joe and Andile Dyalvane in relation to the collection at Rupert Museum and Stellenbosch University Museum.

The featured artists in Bioscope: Santiago Mostyn, Campbell X, Gladys Kalichini, Kofi Ofori-Yeboah, Ixchel Tonantzin Xochitlzihuatl, Aline Motta and Sara Chitambo-Hatira

www.stellenboschtriennale.com





Hâle House

Wentworth-Nord, Canada



Hâle House

Wentworth-Nord, Canada

Perched in an enchanting natural setting, this intergenerational residence blends harmoniously into the forested landscape of the Laurentians, near Lake St-Victor, in the Province of Quebec. Designed to strike the perfect balance between modern comfort and immersion in nature, the home embodies understated elegance, becoming a true family haven where nature and architecture merge in perfect harmony. It captures the spirit of legacy, where past and present meet, with each architectural detail reflecting the bonds uniting the family.

Inspired by clean lines and a gabled structure, the house's silhouette combines classic and contemporary elements. Its architecture embraces the contours of the site, using its slopes to offer breathtaking views while maintaining the privacy of each living space.

The volumes and noble materials integrate seamlessly with the surroundings, maintaining a constant dialogue with natural elements — the rock, the trees, and their canopy. Le Hâle, the north and east wind that dries plants and soil, is a structural presence here, influencing the layout and materiality of the spaces. Symbolising strength and character, it inspires robust architectural forms and durable materials that resonate with their environment.

The selected materials, including light wood for the façades and grey stone at the base of the structure, reinforce the home's natural anchoring, while adding warmth and rustic charm. The black metal roof, with its clean lines, contrasts with the natural tones of the façade, bringing a contemporary touch.



The terraces and outdoor spaces are designed to fully embrace the landscape, allowing the residents to live in symbiosis with nature year-round. These spaces offer the perfect spot to relax while admiring the changing colours of the seasons.

The interior layout is designed to maximise natural light, creating bright and inviting spaces. Large windows and unobstructed views connect every interior space to the surrounding landscapes, ensuring a visual and sensory continuity with nature. The interior spaces prioritise comfort and conviviality, with fluid circulation and generous volumes fostering a serene and welcoming atmosphere.

Natural stone fireplaces serve as warm focal points in the living areas, reinforcing the connection to the natural environment. Their raw, timeless stone mantels evoke the textures and colours of the surrounding landscape. These features add character and resilience.

The sunroom is designed as a luminous sanctuary, oriented due south, making it the perfect place to relax and enjoy the rhythm of the seasons while being sheltered from the elements. With its expansive windows and glass doors, it creates a seamless connection between indoors and outdoors, offering an unobstructed view of the deciduous forest, while allowing sunlight to flood the space with natural warmth.

dw

Technical sheet

- General Contractor: Bois & Nature Construction
- Structural Engineer: GENIEX
- Exterior Cladding: Juste du Pin / Pangaea Natural Stone / MAC Architectural
- Doors & Windows: FABELTA
- Cabinetry: Créations de la Sablonnière
- Staircase: Escalier Maxime Lauzon
- Interior Doors and Moldings: Boiserie VM
- Photographer: Vincent Brillant

www.boom-town.ca



Axonometric views
Photo credit: Atelier BOOM-TOWN



Brisa House

São Paulo, Brazil





Brisa House

São Paulo, Brazil

The Brisa House project redefines the concept of home, combining design, sustainability, and innovation. With its vertical structure and expansive sea views, the large windows and strategic use of the balcony maximise visual contact with the sea and the surrounding nature, providing an immersive experience.

The design stands out with signature pieces like the Equilibrio and Libélula tables. Natural stone and technologies resistant to sunlight and salt air ensure durability, while also facilitating cleaning and maintenance. The windows and balconies maximise the connection with nature, creating a unique experience that promotes the well-being of the residents.

Brisa not only respects the geographical and cultural context in which it is set but also offers its residents a space that is modern, functional, and deeply connected with nature.

An elegant way to illuminate.

In terms of innovation, the project stands out for its intelligent use of materials and adaptive design. The eight metre long tensioned canvas light fixture, for example, is not just a light source but also a centrepiece that changes its appearance with the daylight, replicating the colours of the sunset and adding a dynamic dimension to the space. Additionally, the gourmet area combines practicality and design. Featuring a sink, a dry bar for organising bottles, as well as wine coolers and storage drawers, the space is designed for stylish entertaining.



Rosso Wall

This living space is the epitome of comfort and sophistication. The Rosso marble wall showcases a piece by Brazilian artist Bechara, adding an artistic touch to the environment. A sliding panel conceals the TV screen, which is revealed when needed for entertainment moments. The fireplace provides warmth, making the space perfect for conversations and relaxation.

View of the Atlantic

At Brisa House, the rooftop was designed for sea observation. For this reason, the seating has been arranged to offer a privileged view of the ocean. One of the standout features of the layout is the side table, a genuine ship's propeller topped with a glass surface.

Awapé: A sculpture by Hugo França

The Awapé sculpture, created by renowned Brazilian artist Hugo França, was carefully placed in the garden, amidst the lush forest surrounding the area. Its organic shapes blend seamlessly with the vegetation, naturally integrating into the environment. Its base was designed in corten steel, complementing the house's architecture and enhancing the harmony between art, nature, and structure. Each element was thoughtfully planned to work together, resulting in a setting of pure contemplation and visual balance.

Equilibrio table

The furniture at Brisa was designed to preserve the views, seamlessly blending with its natural surroundings. The Equilibrio table, created by FCstudio, is inspired by the choreography of a ballerina. Its cantilevered metal structure supports the five metre long top, allowing the table to accommodate social interactions around it with a light and sculptural presence, relying on just a single support.

Libélula table

Designed by FCstudio, the Libélula table, as the name suggests, is inspired by the wings of a dragonfly. The table's legs add lightness and open up the view for residents to the beautiful surrounding landscape. The amorphous top introduces an element that, combined with the natural veins of Raffaello marble, makes this piece perfectly aligned with the briefing. A design full of personality.

Onda sideboard

Inspired by the coastline of São Paulo, the Onda sideboard, designed by FCstudio, was created based on a photo of Iporanga beach, capturing the moment when the sea waves meet the sand. The curved Krion doors were shaped in an organic and symbolic way to translate the genius loci of the piece into furniture design.

Haste Lamp

Created to illuminate a sculpture in a homogeneous way, the Haste lamp, designed by Flávio Castro, founder of FCstudio, is a horizontal, minimalist light fixture that floats in space, without adornments or ornamentation.

Stonehenge table

The Stonehenge Table also carries the FCstudio DNA. It is inspired by the robustness of the Neolithic stones of Stonehenge. The tabletop and structure are formed solely by the positioning of the parts, all made from the same material, raw and timeless. It was an attempt to use leftover materials from the house under construction. dw





Technical sheet

- Brisa House
- Iporanga beach, São Paulo, Brazil
- Architect Lead: Flávio Castro
- Design team: Leonardo Vieira and Bruna Antonialli
- Year: 2024 | Project area: 1500m²
- Photography: André Mortatti
- Photo and Video credit: photo by André Mortatti

www.fcstudio.com.br



Catchacoma Cottage

Canada

Catchacoma Cottage

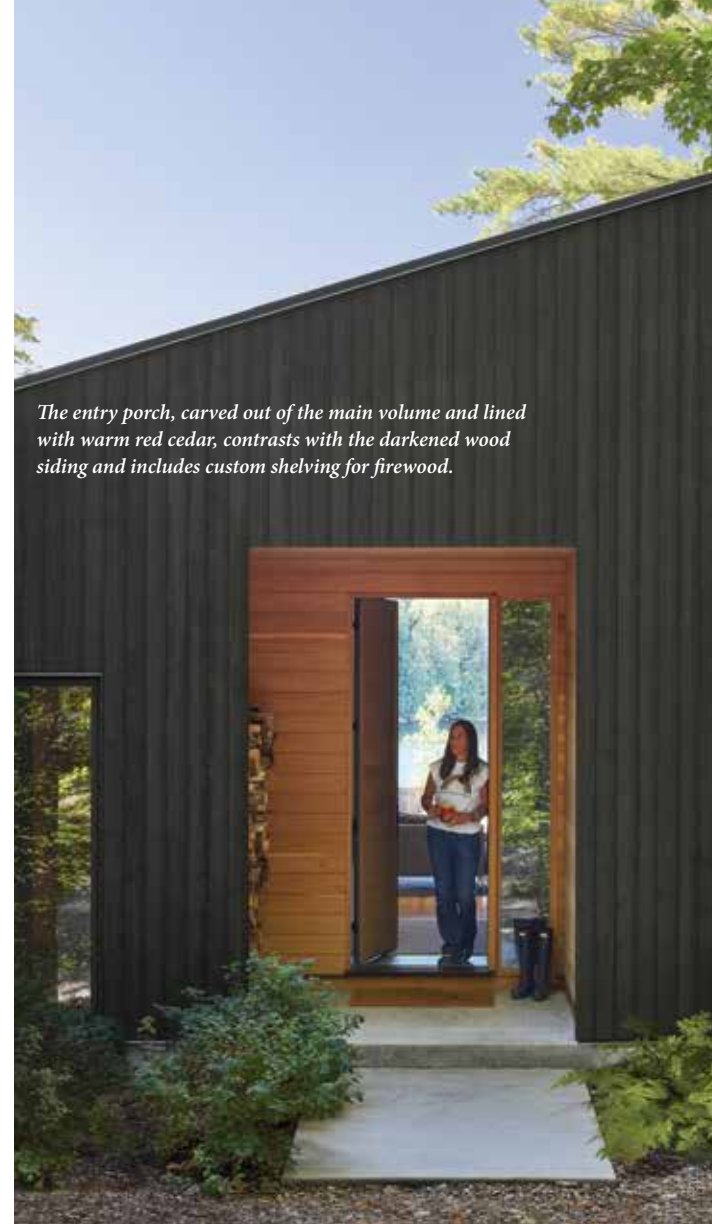
Canada

Designed for an extended family of three generations, this one-storey cottage is situated on a peninsula with a panoramic view over Lake Catchacoma. Defined by its three volumes, the cottage coexists within an opening of a mature forest where a previous structure once stood. The design, by Dubbeldam Architecture + Design, takes its cue from the sloping topography that rises from the water's edge, seamlessly integrating the cottage into its surroundings and creating a deep connection to the landscape.

The cottage's three volumes function as discrete wings unified beneath a single roof with steeply sloped rooflines. A central gathering space includes an area for living and dining, with soaring ceilings, a kitchen, and a loft space tucked above. Family and guest bedrooms are clustered into their respective wings, flanking the central volume.

The cottage includes six bedrooms, two bathrooms, and a family room with a footprint of 205 square metres, emphasising sociability and the shared experience of cottage life. Steeply sloped rooflines articulate the three volumes, each situated at a different floor height following the natural grade of the site, while being connected by a central core that opens up views between them. Where the rooflines meet at varying heights, clerestory windows direct light and natural ventilation into lofted spaces and the living room below.

To sustain a continuous connection to the landscape, the design approach minimises visual and physical barriers between interior and exterior spaces to enhance enjoyment of the cottage experience.



The entry porch, carved out of the main volume and lined with warm red cedar, contrasts with the darkened wood siding and includes custom shelving for firewood.



The design emphasises a continuous visual connection to the landscape. A central circulation spine connects the three volumes, framing curated outdoor views at each end.



Catchacoma Cottage - Kitchen Detail



Catchacoma Cottage - Bedroom



The sunroom is a cosy retreat, enhanced by large windows that frame views of the lake and fill the space with natural light.



Three distinct volumes with steep rooflines are integrated, connecting the main and guest bedroom wings with the central living area, while clearly defining the separate spaces within the cottage.



The cottage was placed within an opening of a mature forest where a previous structure once stood, minimising environmental impact and preserving the existing trees. Nestled among the trees, the cottage is visible from the lake, blending into its natural surroundings.



Where the rooflines converge, a loft space provides a cool hangout for teenagers, creating an intimate nook above the open floor plan that overlooks the double-height living area.



Catchacoma Cottage - Deck



In the living room, a freestanding wood-burning stove is set on a slate stone ledge, complemented by a custom steel firewood storage solution.

"Views and access to the exterior are featured along every axis," explains Heather Dubbeldam, Principal. "Immediately upon entry, a large glazed sliding door opens up to views of the lake, and circulation routes culminate in windows to visually connect with the surrounding landscape."

On the interior, a palette of white and wood with dark accents carries throughout. Maple plywood lines the interior walls, complemented by charcoal grey doors and cabinets. An unfinished cold-rolled steel wall forms a dramatic backdrop to the wood-burning stove and custom firewood storage, while a reclaimed wood wall demarcates the entry foyer. Additional accents include the kitchen's greystone island and dark metal details, which contrast with the light wood materials used throughout the cottage.

Grey-stained wood serves as the exterior cladding, allowing the cottage to blend into its landscape with a textured natural finish that complements the surrounding dark tree trunks. The entry porch, lined with warm red cedar, appears sculpted from the central volume, drawing attention to the main entrance. An expansive deck stretches along the cottage's lakeside for large family gatherings or quiet outdoor relaxation. Designed to integrate seamlessly with the natural slope of the site, the deck cascades in multiple tiers towards the water's edge, providing space for various outdoor activities.

Catchacoma Cottage embraces a holistic approach to sustainable design, incorporating passive and active strategies to minimise the environmental impact. Designed as a four-season retreat, its HVAC system allows zones and wings to be shut down in winter, reducing energy consumption. Vaulted ceilings and large operable windows enhance passive ventilation and natural daylighting, reducing reliance on air conditioning and artificial lighting. Other sustainable features include high-performance glazing, low-flow plumbing, energy-efficient fixtures and appliances, and a heat-recovery ventilation system, complemented by a tight building envelope with insulation levels exceeding code requirements. Responsibly sourced wood, the dominant construction material, is Forest Stewardship Council (FSC)-certified, promoting sustainable forestry and reducing the project's carbon footprint.

dw

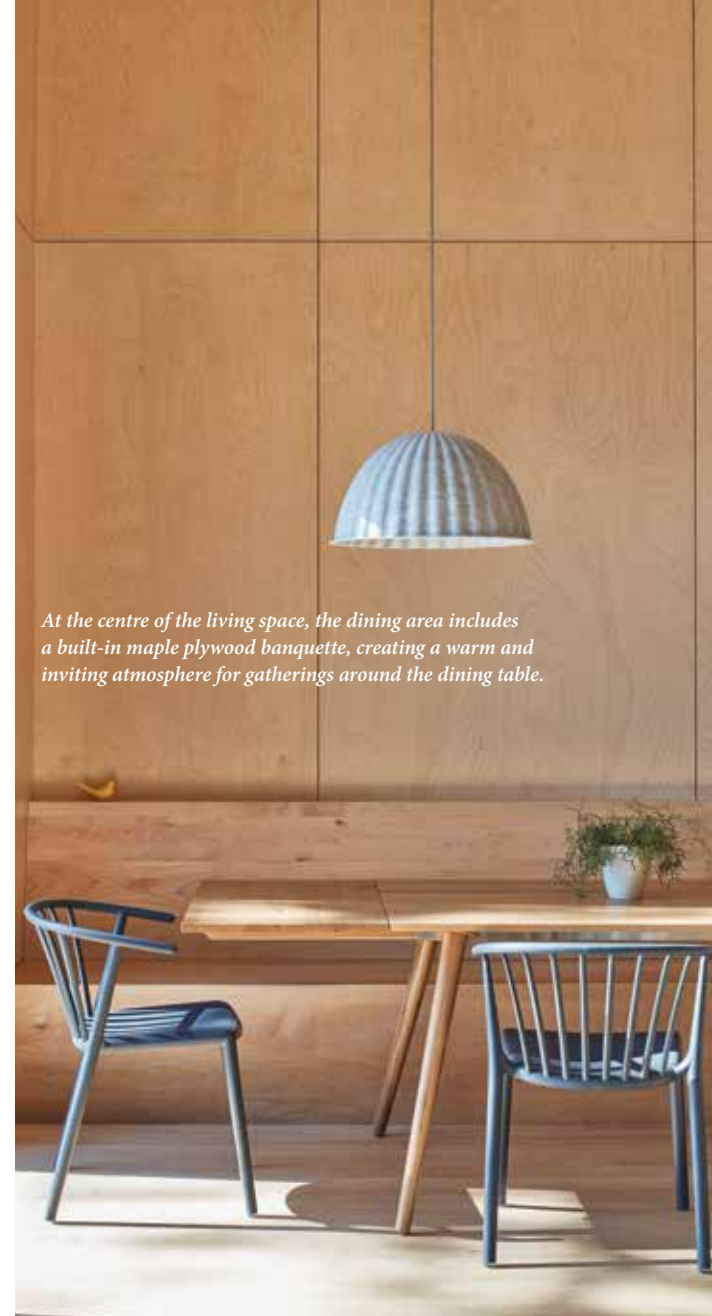


Catchacoma Cottage - Aerial View

Technical Sheet

- Location: The Kawarthas, Ontario
- Size: 2,210 s.ft. , 205 s.m.
- Completion: 2023
- Photography: Riley Snelling
- General Contractor: Ortolan Building Design Ltd.
- Structural Engineer: Blackwell Structural Engineers

www.dubbeldam.ca



At the centre of the living space, the dining area includes a built-in maple plywood banquette, creating a warm and inviting atmosphere for gatherings around the dining table.



Catchacoma Cottage - Front Façade Detail



A natural palette is carried throughout the interior, ensuring a consistent sense of warmth and authenticity. The cold-rolled steel behind the fireplace creates a striking contrast to the maple plywood-lined walls, adding visual interest and texture to the space.



Upon entry, visitors are immediately greeted with a view through the living space and out the large rear sliding glass doors, revealing the lake beyond.



The kitchen, tucked beneath the loft, contrasts the warm hues of maple plywood with cool greys. It features Greystone counters, charcoal cabinetry, and a waterfall island.



Subscribe now! to the trade magazine for professionals that's read from cover to cover.

Let this be the beginning of an inspiring journey into the wonderful world of design.

To subscribe to our digital edition, email your subscription request to: subscriptions@designingways.com and include the following details:

- Company name
- Contact person
- Contact email address.

Print copies are quoted on request.

Digital Editions can be viewed on our website

Designing Ways Digital

www.designingways.com



www.facebook.com/designingways/

TAIL OF THE DOG

Mosquito

This small annoying fly is so named from a combination of Spanish and Portuguese: mosca (fly) and ito (little).

Mozzies are persistent, and the bites of the females (the males only drink nectar) can cause serious illnesses like malaria, yellow fever, dengue fever as well as huge irritation to humans. When you are bitten by a mosquito, there is a transfer of saliva from the female which causes an itchy rash that gets worse over days. Not to mention the lack of sleep, the fury knowing there is one in the room but you can't catch it.

Prevention of mosquitos attacking is a subject in its own right. Mosquito nets (in some hot and humid countries, the nets are permeated with mosquito repellent) are vital. They are simple, inexpensive, but can be custom-made to fit four poster beds, to stop

the claustrophobic feeling some people get from sleeping under them. Some nets are high enough to have a fan underneath. Screens on the windows help, and a fan in the room not only brings down the temperature but also bats the mozzies out of the way with the air movement. For campers, sophisticated tents have net or screen openings to help keep the critters out.

Sprays and repellent creams are vital if you want to enjoy a sundowner at dusk, your ankles and bare skin are mozzie magnets. Apparently, they like the smell of stinky cheese, so some people's feet are a great draw. Certain plants are helpful like lemon grass (citronella), lavender, marigolds, catmint, rosemary, basil, mint and sage. Plant oils like lemon eucalyptus and citronella help. These can be used with diffusers or in candles.

Mosquitoes are attracted to dark colours, so avoid wearing green or black, and stick to pale greys, beiges and white.

Make sure there is no standing water near the house or sleeping areas, this is where they breed. Clear the gutters, so the rainwater flows and doesn't create small pools. A thin layer of paraffin oil on the water surface in rainwater tanks can also stop the breeding ground by creating a barrier that suffocates the larvae, as they need to get to the water surface to breathe.

An African proverb says: if you think you are too small to make a difference, you haven't spent the night with a mosquito.

Gill Butler

Wave



Tel: 011 434 0444, Email: Shantelle@chairexpress.co.za
44 Hulbert Rd Cnr Rosettenville Rd, New Centre, Johannesburg

www.seatsahead.co.za

chair
express

furniiko

SCREEN
DIVISION

SEATS
AHEAD

Nightside NS01 Honoured with 2024 LIT Design Award for Energy Saving Lights

San Francisco, United States

Nightside, a California based lighting company, announced that the company has been honoured with the 2024 LIT Design Award for Energy Saving Lights for its NS01 Table Lamp.

Nightside's NS01 table lamp features a minimal, curved exterior that conceals a clever extendable spotlight within. The lamp's dimmable warm-white LED creates a relaxing and warm ambiance at night-time. When more light is needed, a press of the top reveals the patented reading spotlight, which utilises an optical projection system to create a focused spotlight that won't disturb a sleeping partner. Because the entire design operates on a single LED, it results in an ultra-efficient product that uses a single Watt of power.

The LIT Design Awards celebrate excellence in lighting and interior design, recognising innovative projects, creative

solutions, and emerging talent from around the world. The awards aim to honour designers and architects whose work enhances spaces through visionary use of light and design, creating impactful environments. With categories spanning architectural lighting, interior design, and product innovation, the LIT Design Awards serve as a platform to showcase and reward outstanding contributions to the field. [dw](#)

Technical sheet

- Nightside NS01 Luminaire
- **Project Completion:** September 2023
- **Designer:** Jess Gupta
- **Location:** San Francisco, California, USA
- **International Patents:** US10,690,303; AU2,018,395,234; CN201880083989.3; CA3,086,521; EP18896216.1
- **Photo credit:** OMA Creative

www.nightside.com



HOTEL & HOSPITALITY EXPO AFRICA

11-12 June 2025

Cape Town International Convention Centre
Cape Town, South Africa

Co-located with

Africafood Show

Africa's premier Hotel & Hospitality confex: Connecting people, powering business.

#hotelandhospitalityexpoafrika

The future of African hospitality unfolds in Cape Town! Join us for the landmark **8th Annual Hotel & Hospitality Expo Africa**, taking place for the very first time in the vibrant city.

Showcase your company to thousands of local and international buyers from hotels, restaurants, and resorts across sub-Saharan Africa.

SECURE YOUR SPOT AND GET READY TO GROW YOUR CUSTOMER BASE WITH MEANINGFUL CONNECTIONS AND VALUABLE LEADS.



GENERATE
QUALITY LEADS



EXPOSE YOUR BRAND
TO A TARGETED
AUDIENCE



ESTABLISH
INVALUABLE
RELATIONSHIPS



EXPLORE NEW
BUSINESS
OPPORTUNITIES



POSITION YOURSELF
AS A THOUGHT
LEADER

BOOK YOUR STAND OR SPONSOR

Belinda Wewege

✉ Belindawewege@dmgevents.com

☎ +27 11 783 7250

www.thehotelshowafrica.com

Organised by

dmg & KAOÜN

SMART WINDOW COVERINGS



Be
inspired

COULISSE

since 1992

coulisse.com